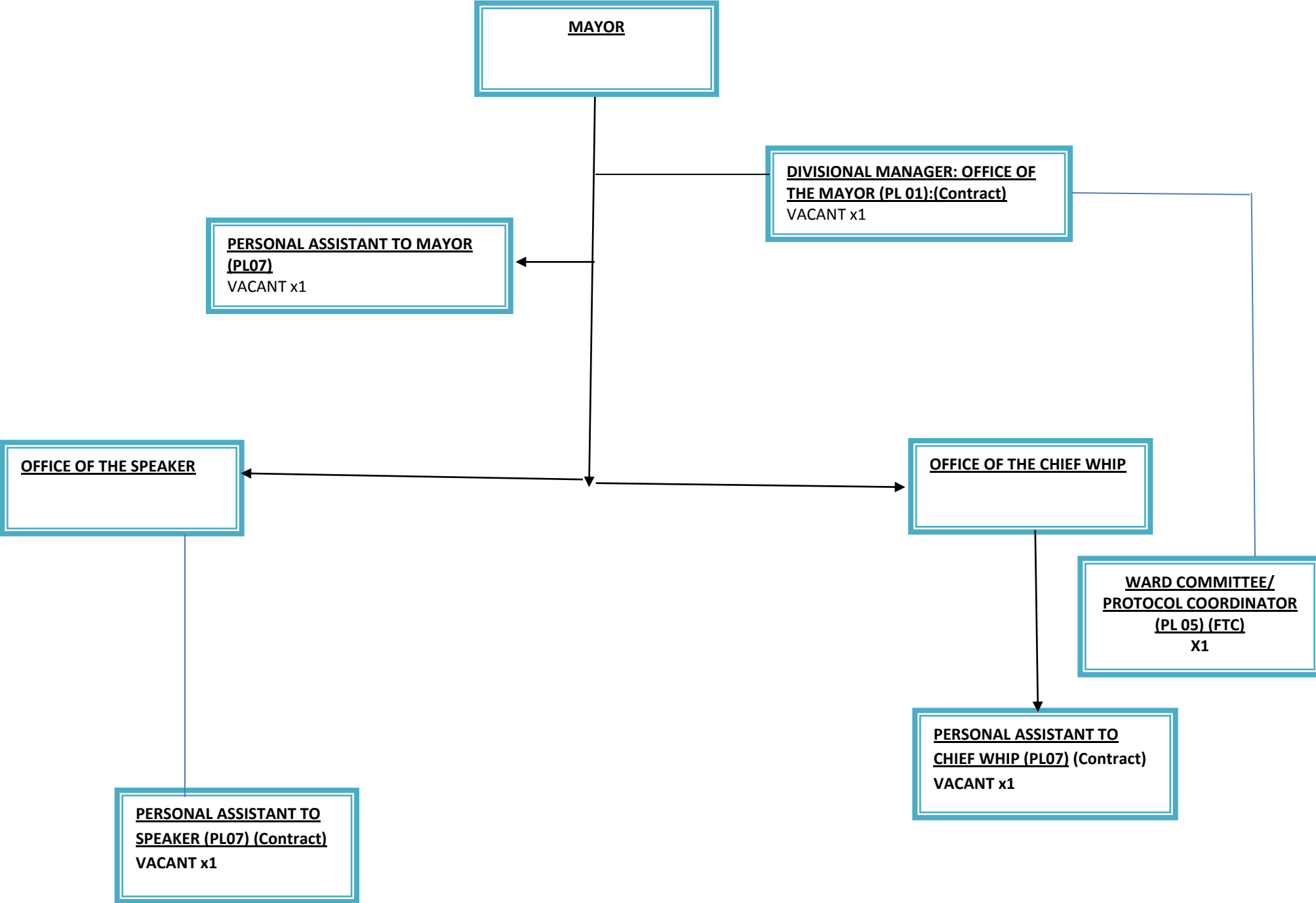


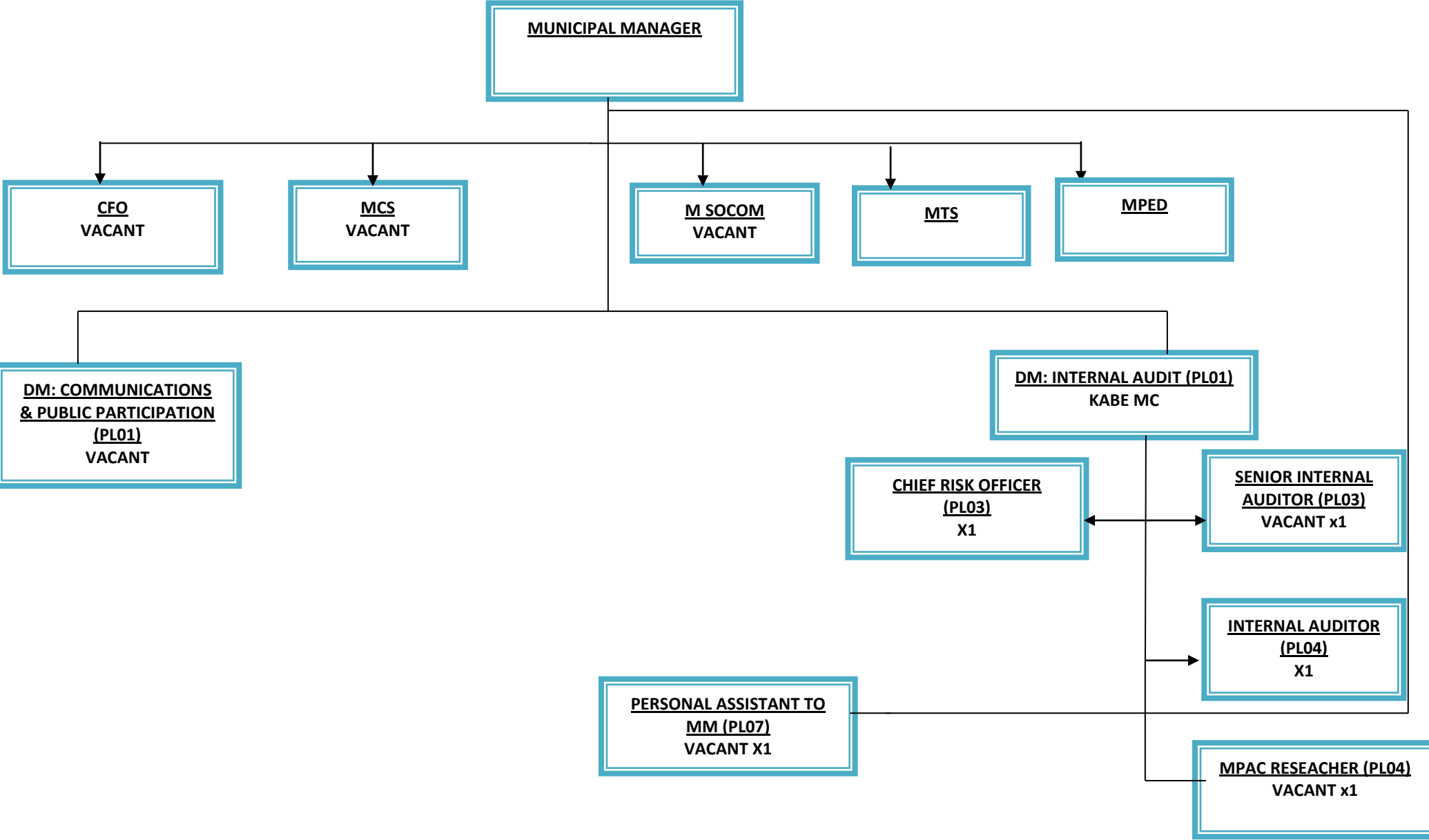
**APPROVED
ORGANIZATIONAL
STRUCTURE
2017/18**

MAYOR'S OFFICE ORGANOGRAM

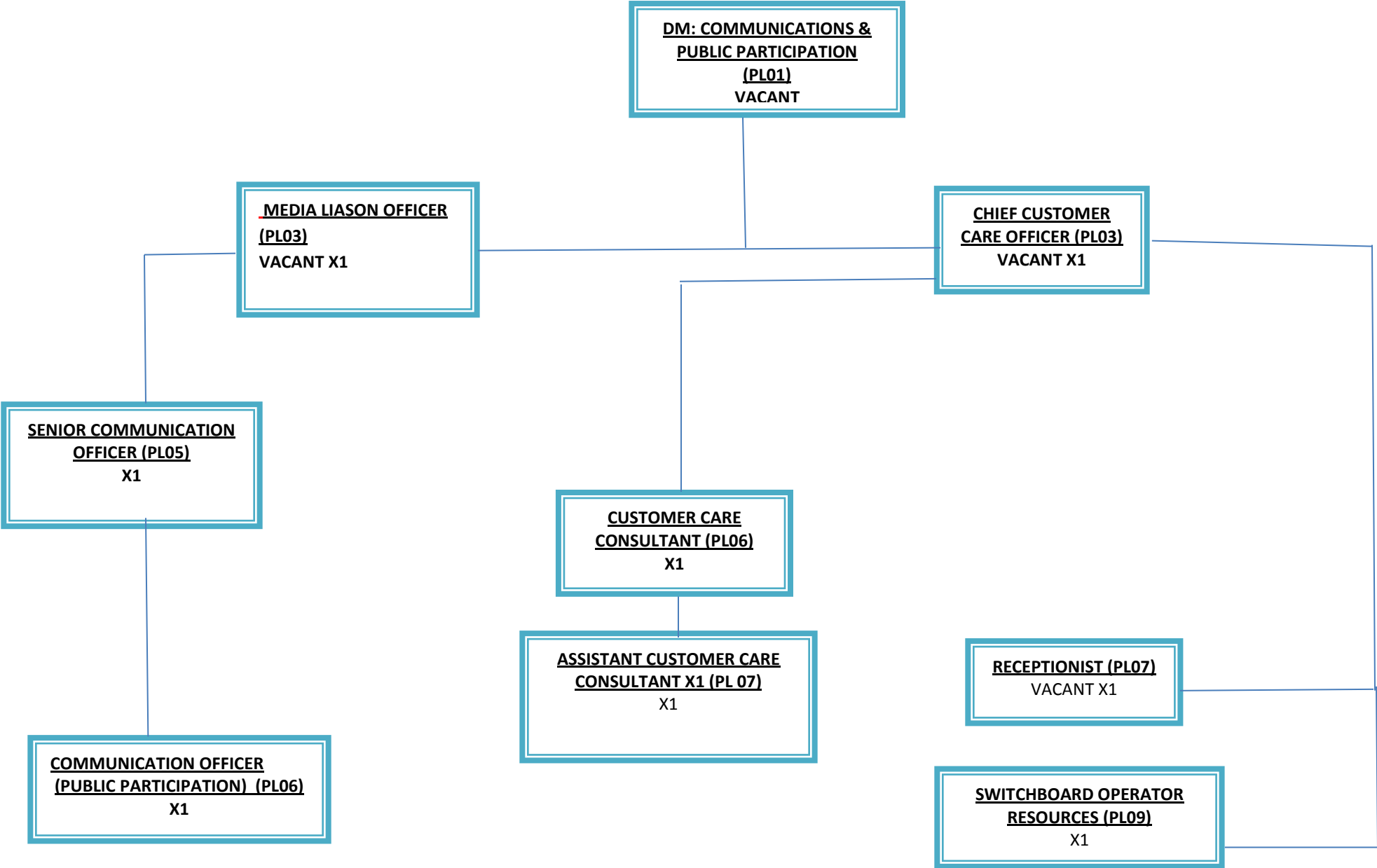
ORGANOGRAM- OFFICE OF THE MAYOR/CHIEF WHIP/SPEAKER



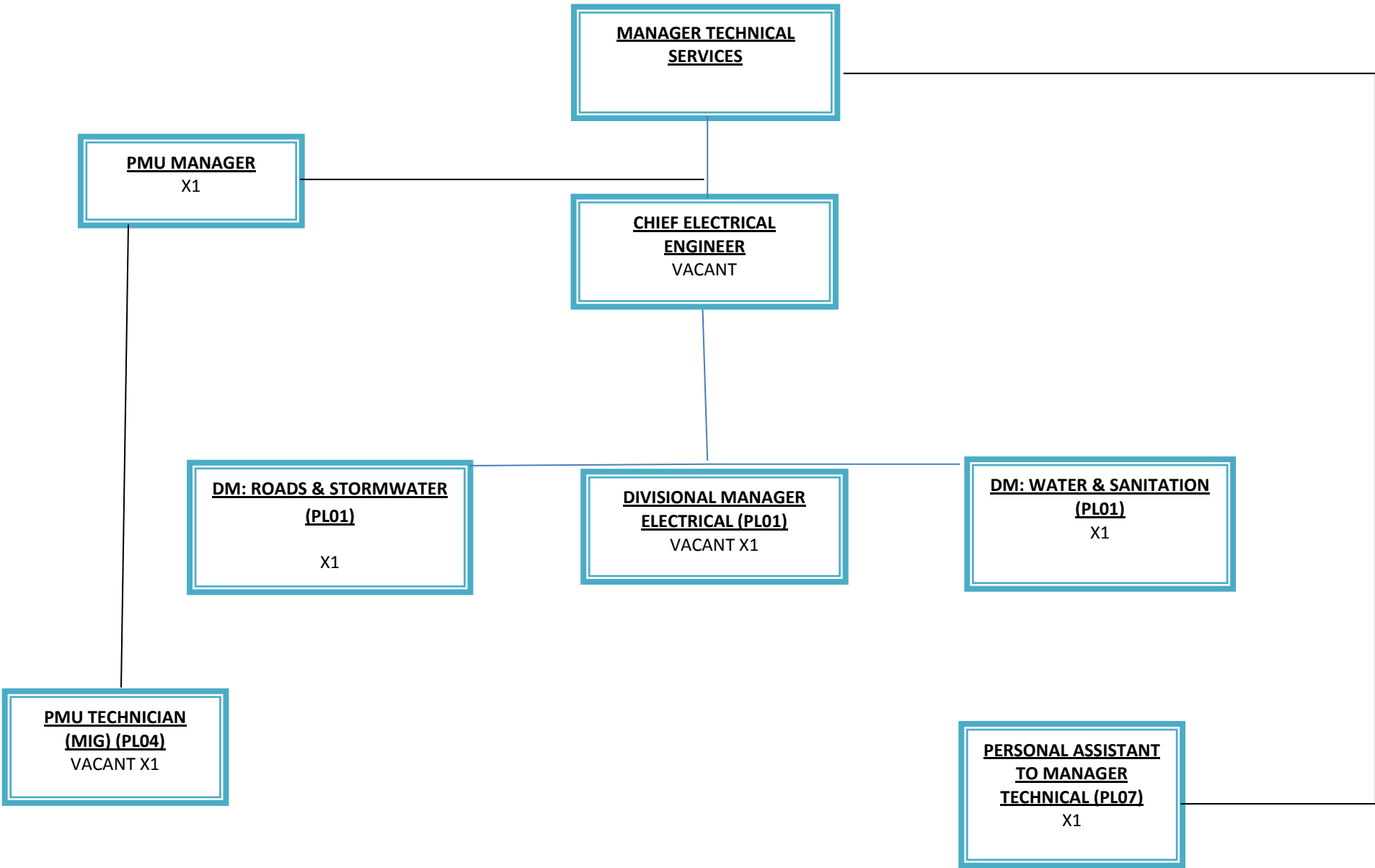
ORGANOGRAMS – MUNICIPAL MANAGER’S OFFICE DIVISION



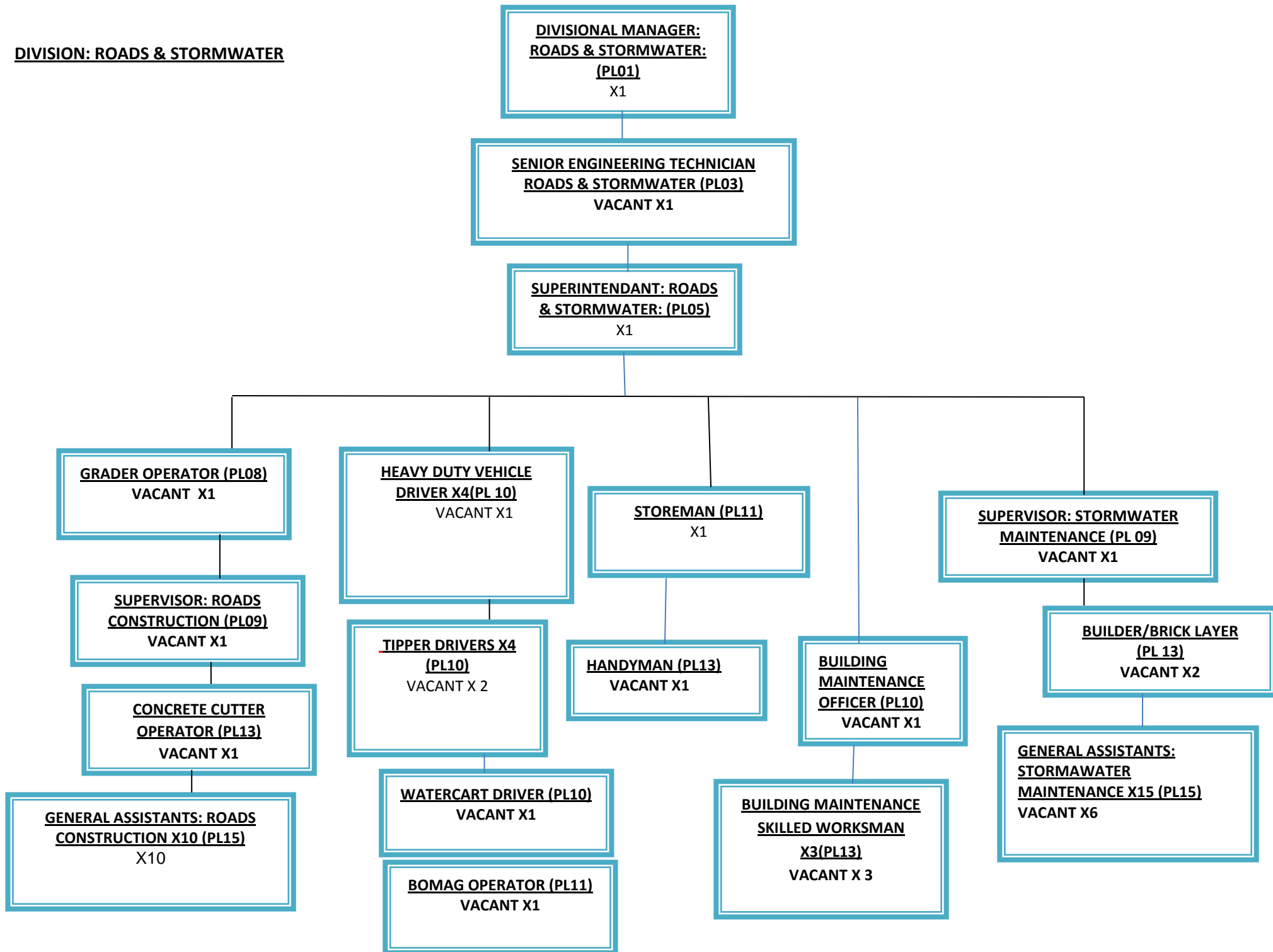
ORGANOGRAM- COMMUNICATION DIVISION



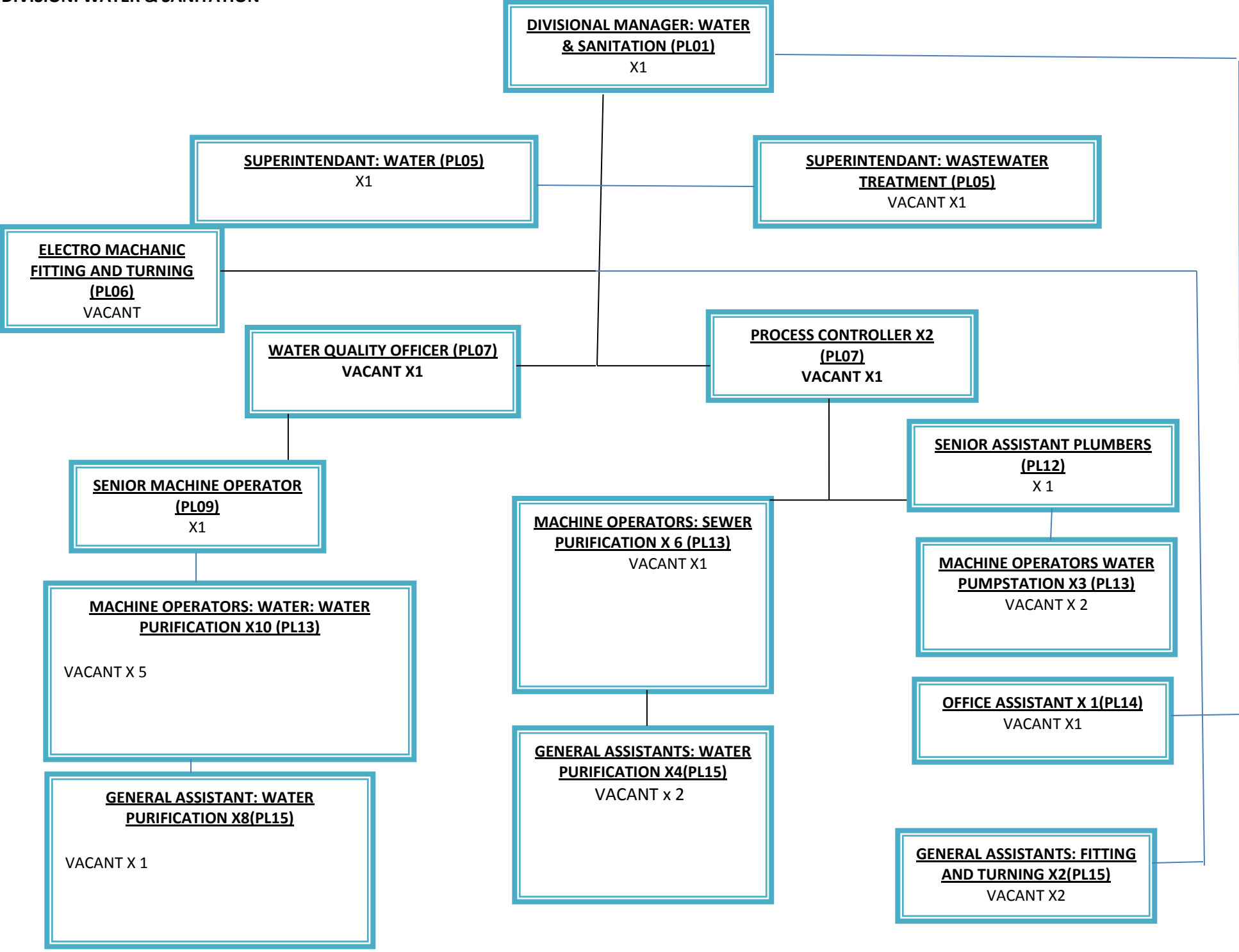
ORGANOGRAM – MANAGER TECHNICAL SERVICES



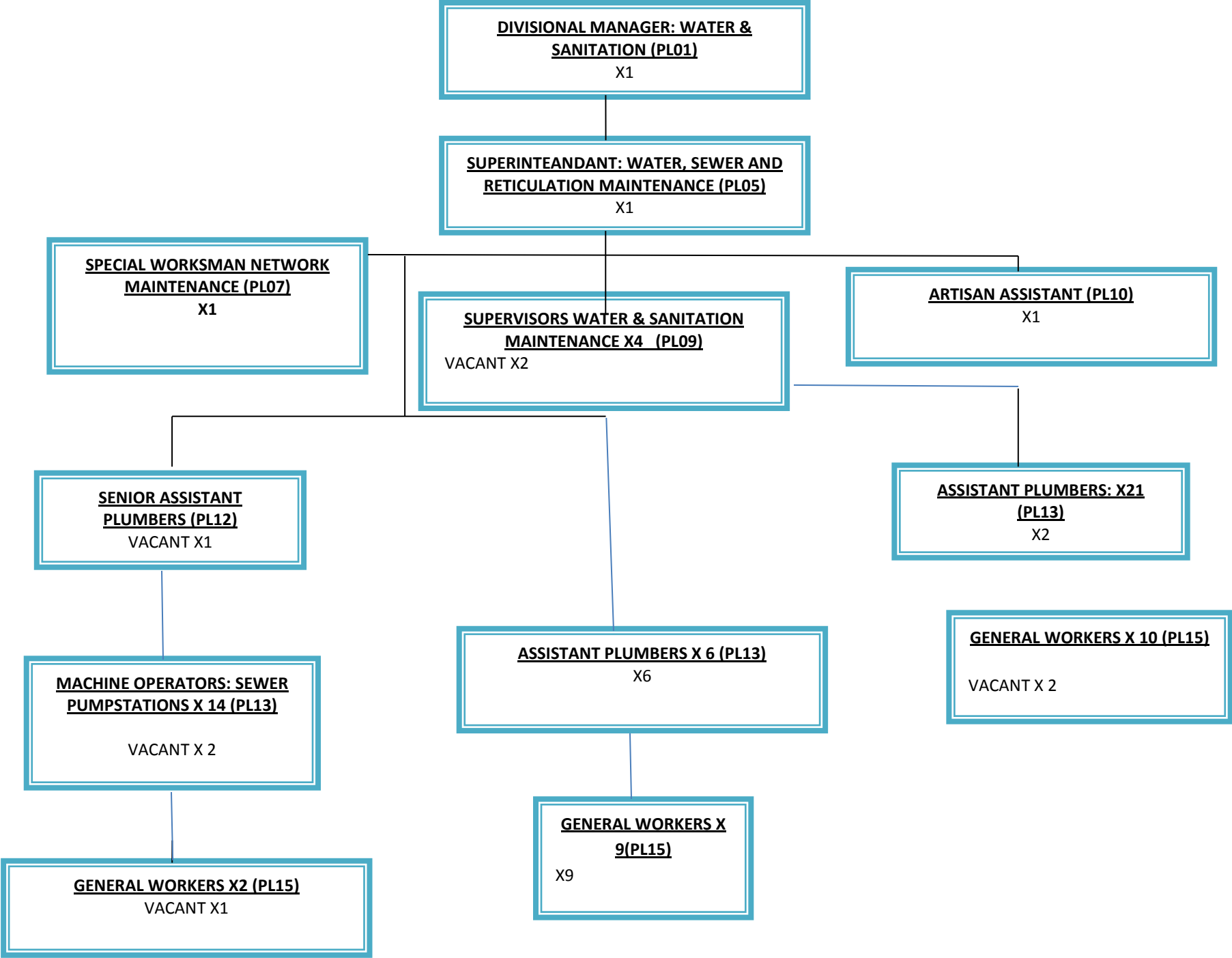
DIVISION: ROADS & STORMWATER



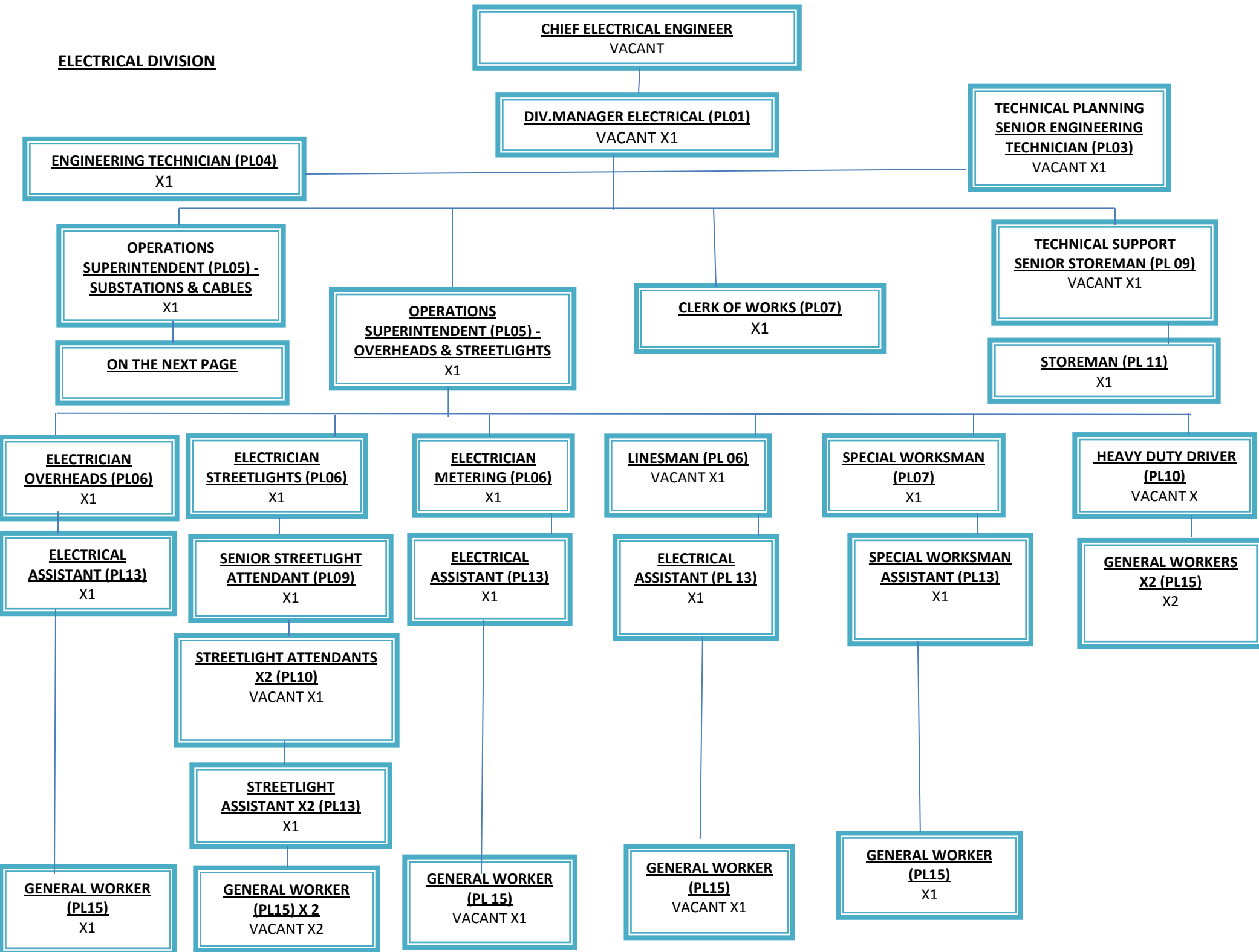
DIVISION: WATER & SANITATION



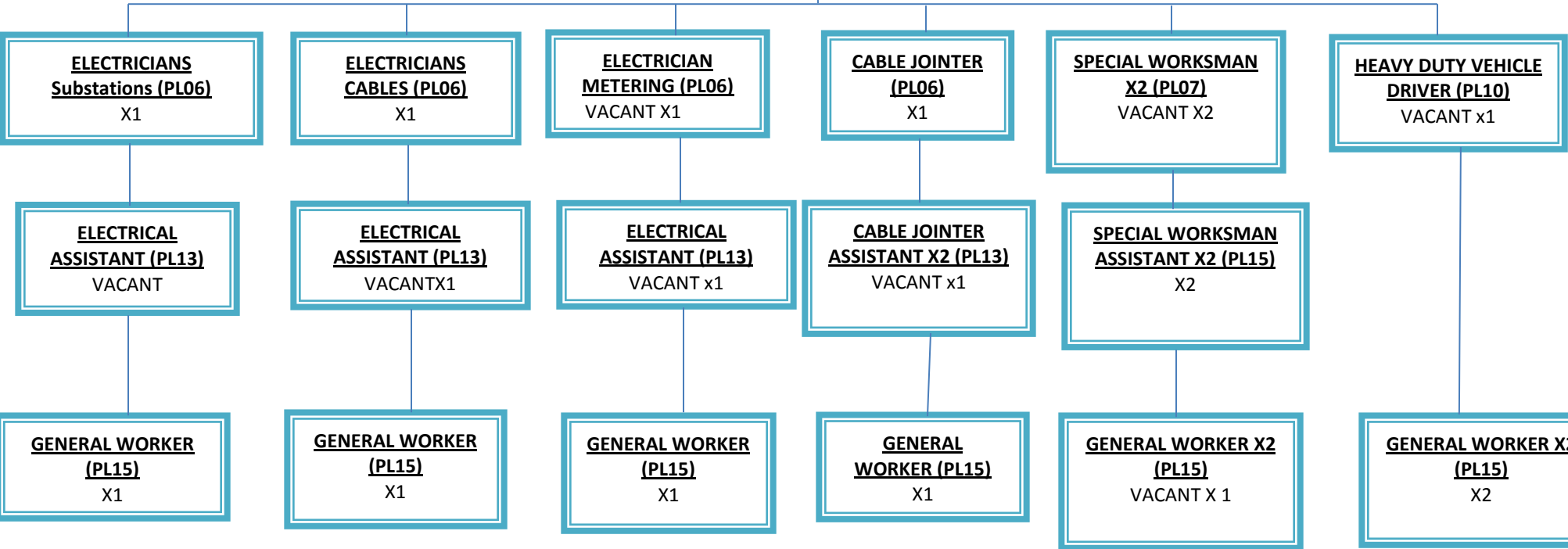
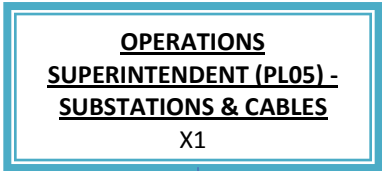
DIVISION: WATER & SANITATION (CONTINUED)

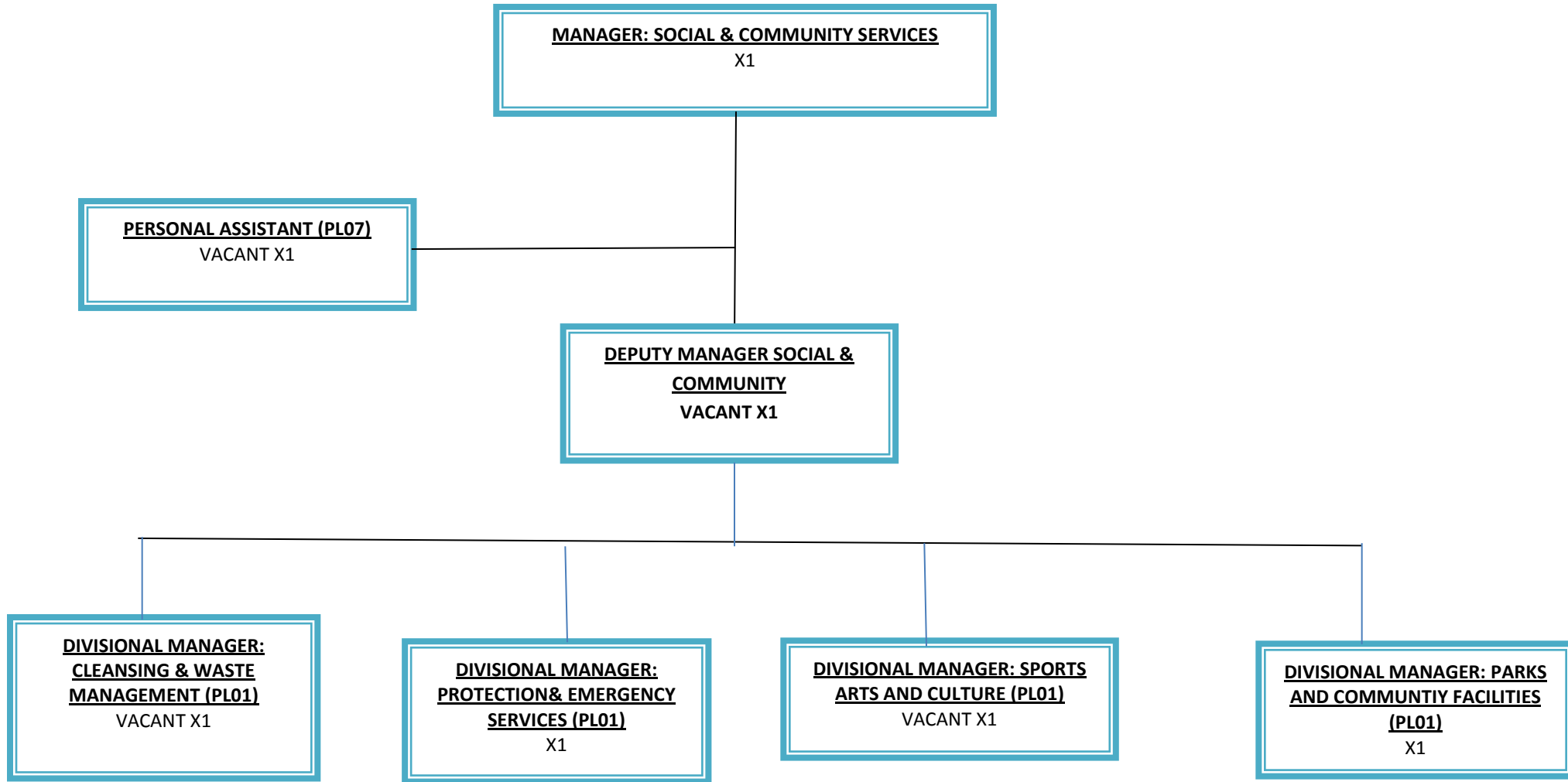


ELECTRICAL DIVISION



ELECTRICAL DIVISION





DIVISION: PARKS & CEMETERIES

DIVISIONAL MANAGER: PARKS & COMMUNITY FACILITIES (T15)
X1

HORTICULTURALIST (PL03)
VACANT X 2

SUPERINTENDANT: PARKS, CEMETERIES & COMMUNITY FACILITIES (PL05)
X1

COMMUNITY FACILITIES ADMINISTRATOR X2 (PL07)
VACANT X 1

SUPERVISOR (PL09)
X1

JCB OPERATOR (PL10)
X1

TRACTOR DRIVERS X4 (PL12)
VACANT X1

STOREMAN (PL 11)
X1

TRUCK DRIVERS/OPERATORS X 3 (PL11)
VACANT X2

GENERAL WORKER/CARETAKER PARKS X 13(PL 15)
VACANT X13

CARETAKER FACILITIES (PL13)
VACANT X1

GRAVE CARETAKER (PL 13)
VACANT X1

GENERAL WORKERS X 34 (PL15)
VACANT X 3

GENERAL WORKERS X4 (PL15)
X4

DIVISION: SPORTS ARTS AND CULTURE

**DIVISIONAL MANAGER: SPORTS ARTS AND
CULTURE (PL01)**
VACANT X1

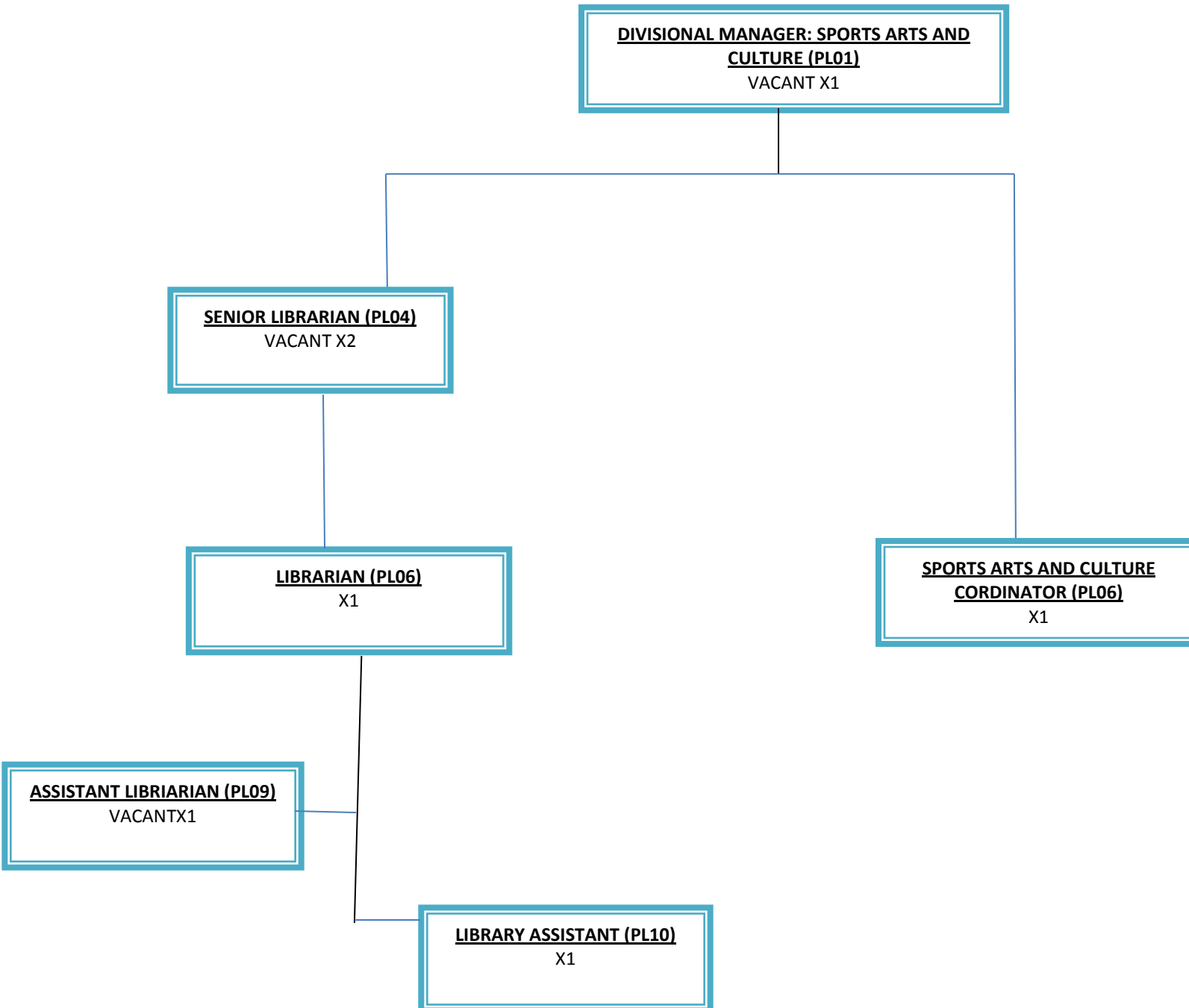
SENIOR LIBRARIAN (PL04)
VACANT X2

LIBRARIAN (PL06)
X1

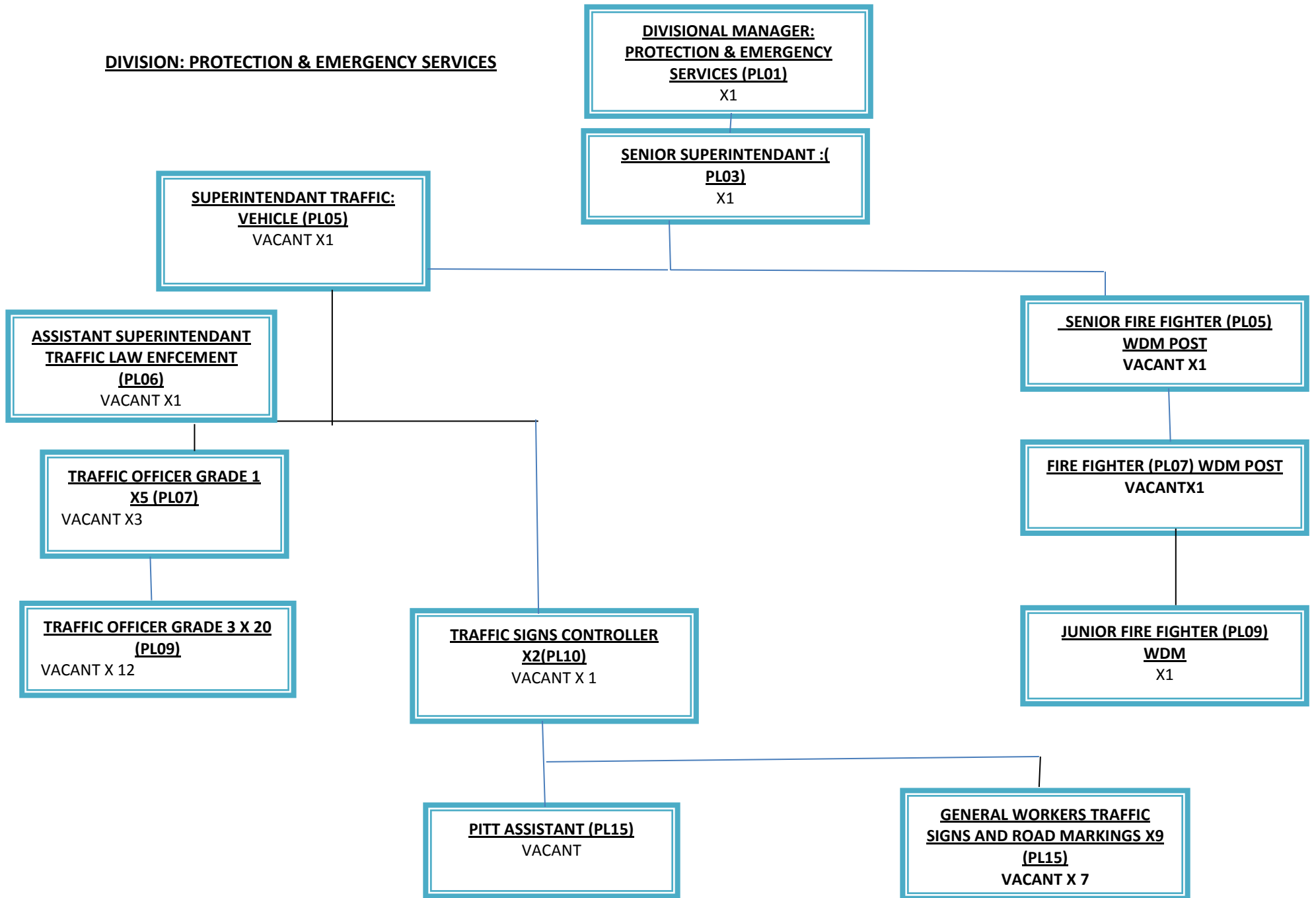
**SPORTS ARTS AND CULTURE
CORDINATOR (PL06)**
X1

ASSISTANT LIBRIARIAN (PL09)
VACANTX1

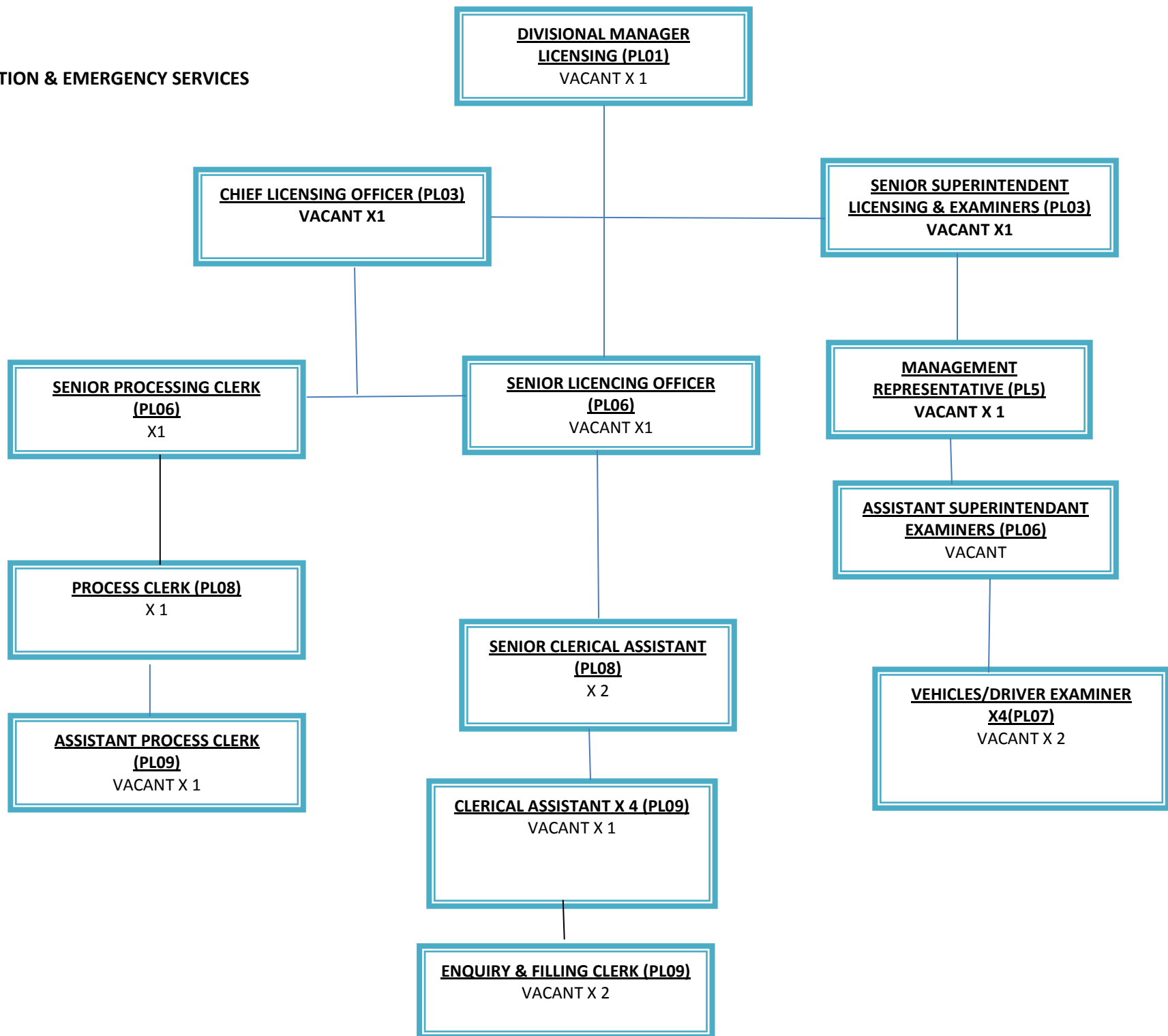
LIBRARY ASSISTANT (PL10)
X1



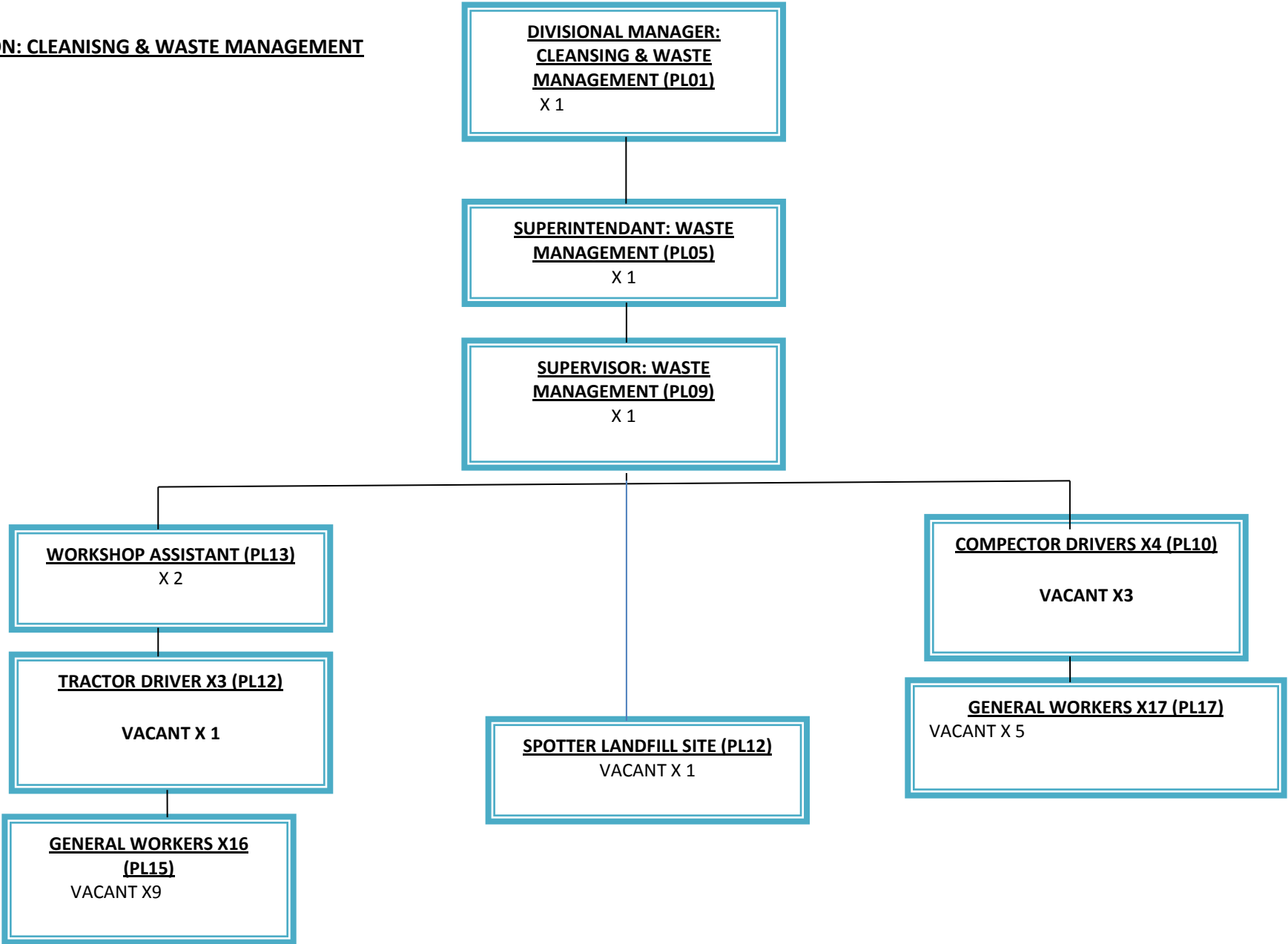
DIVISION: PROTECTION & EMERGENCY SERVICES



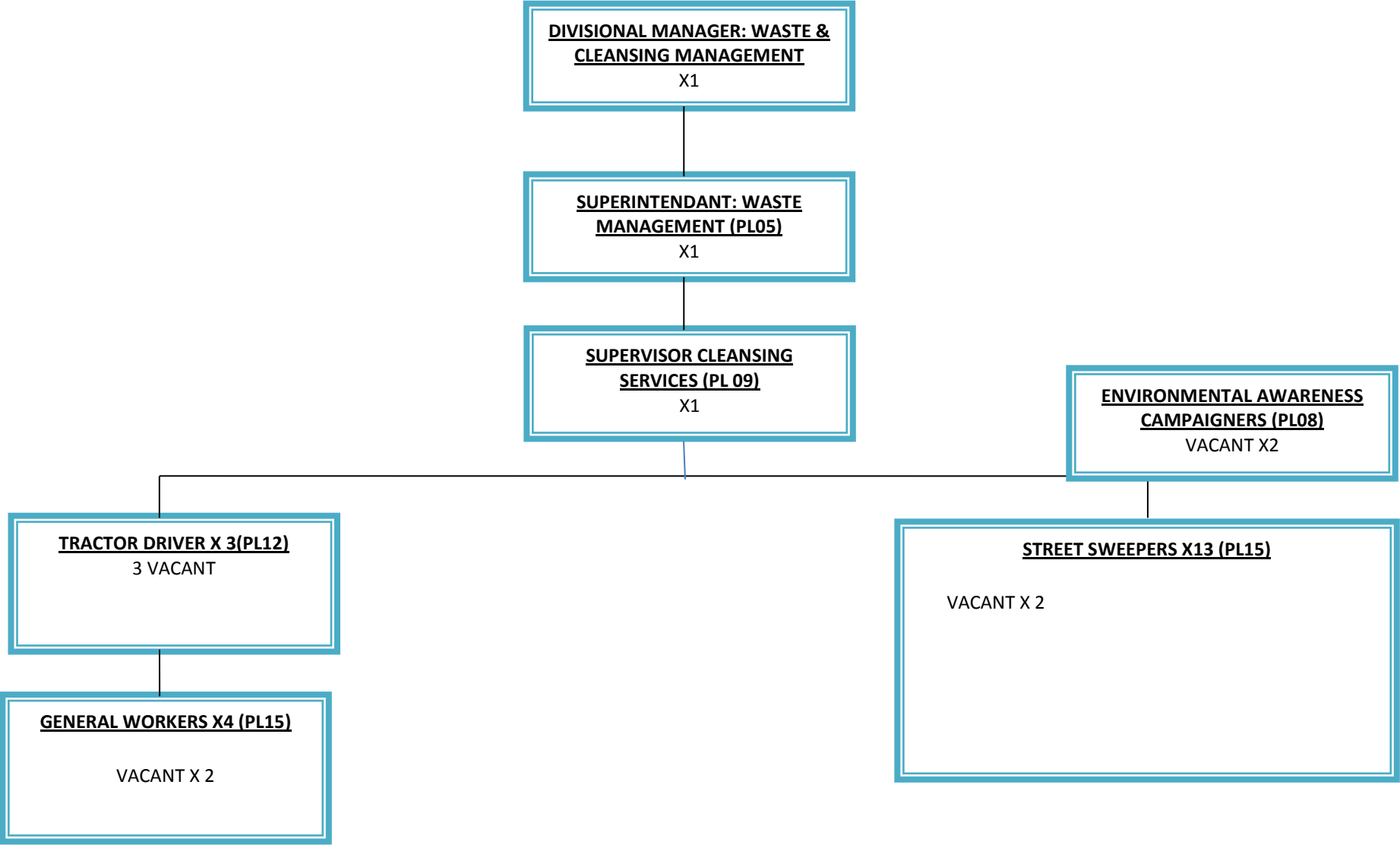
PROTECTION & EMERGENCY SERVICES



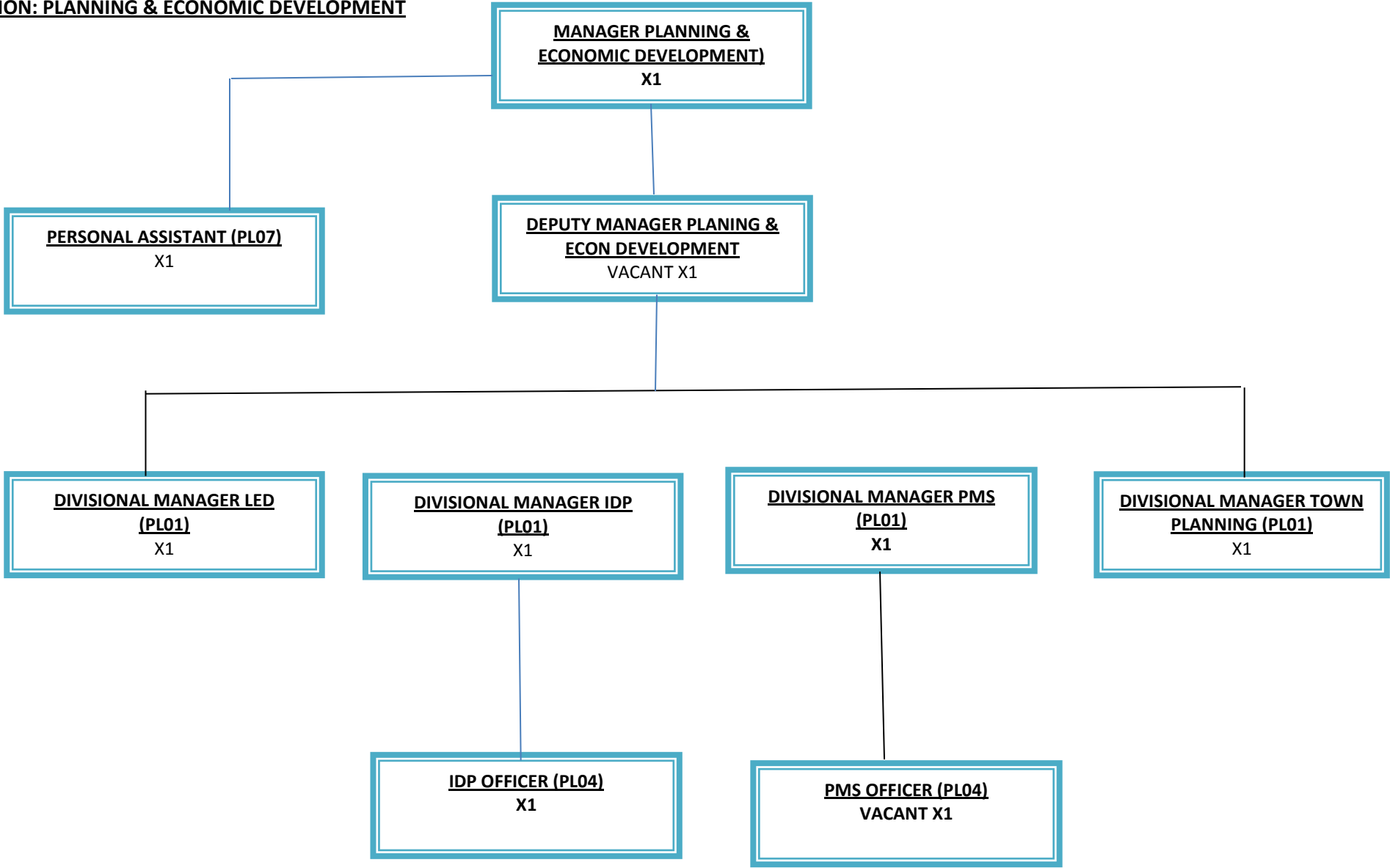
DIVISION: CLEANISNG & WASTE MANAGEMENT



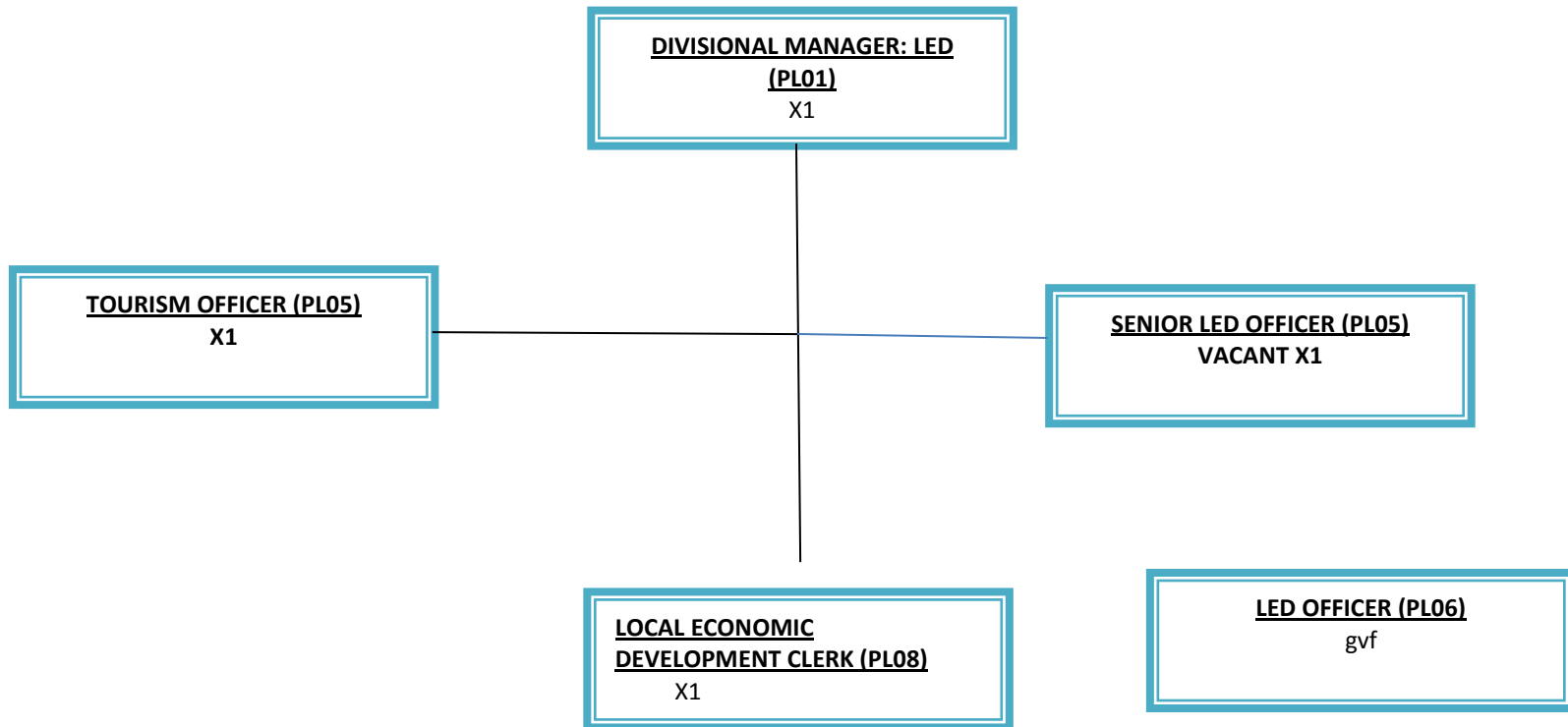
DIVISION: CLEANSING & WASTE MANAGEMENT (CLEANSING)



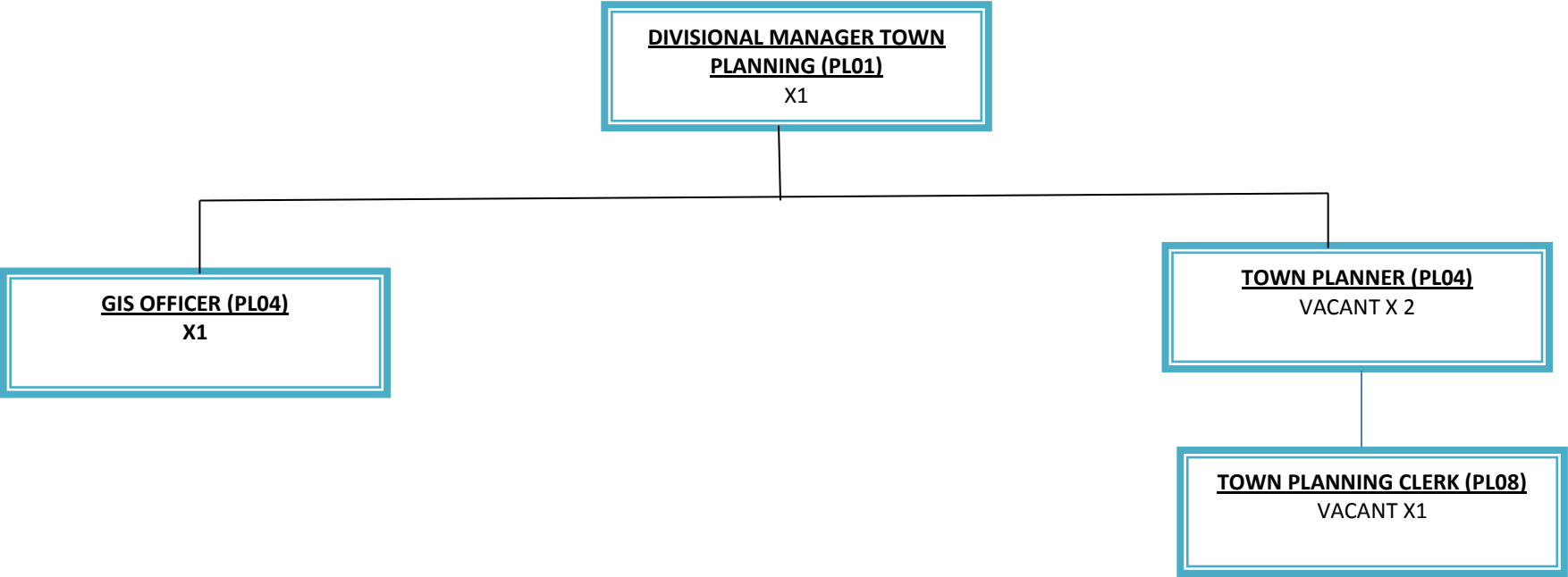
DIVISION: PLANNING & ECONOMIC DEVELOPMENT



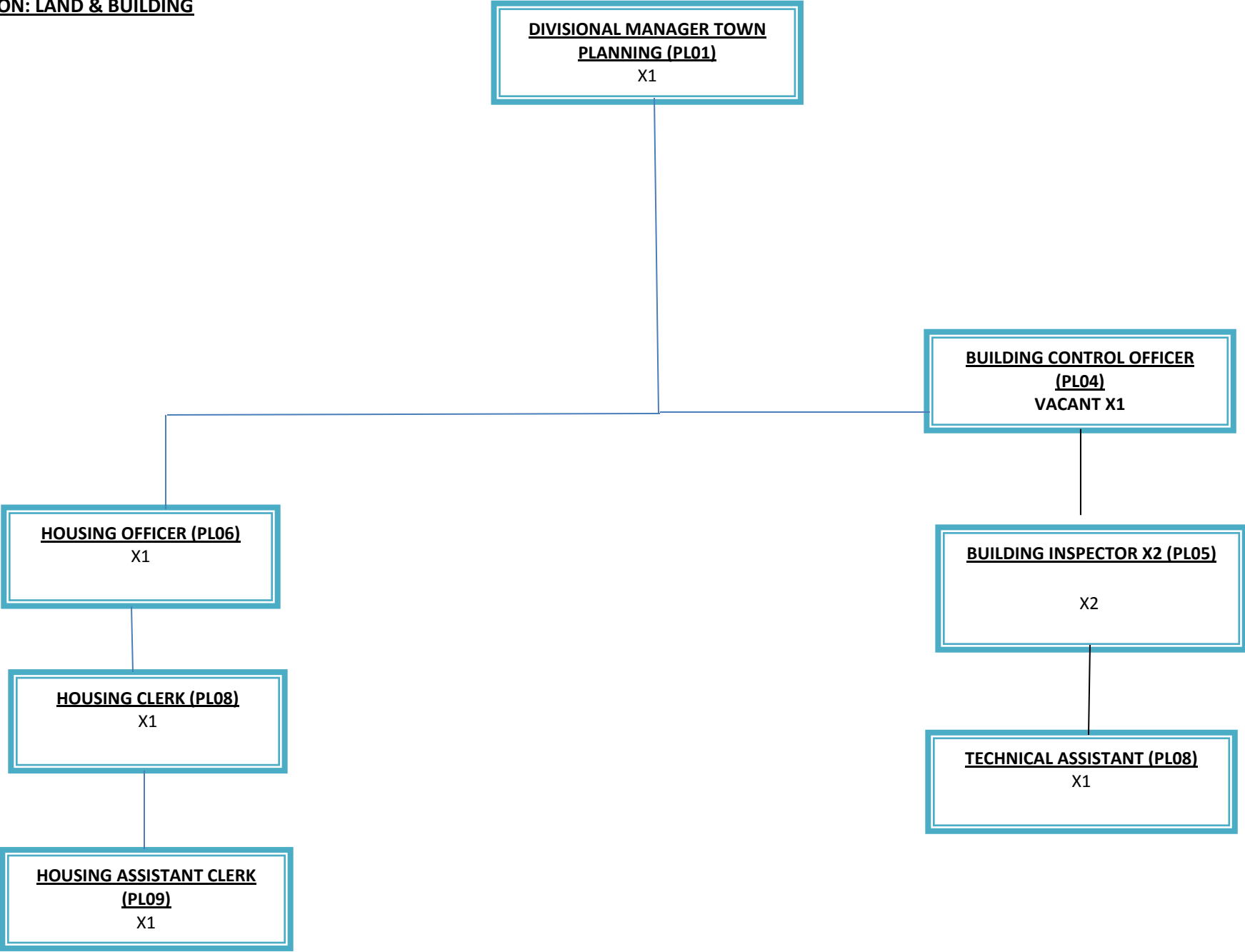
DIVISION: LOCAL ECONOMIC DEVELOPMENT



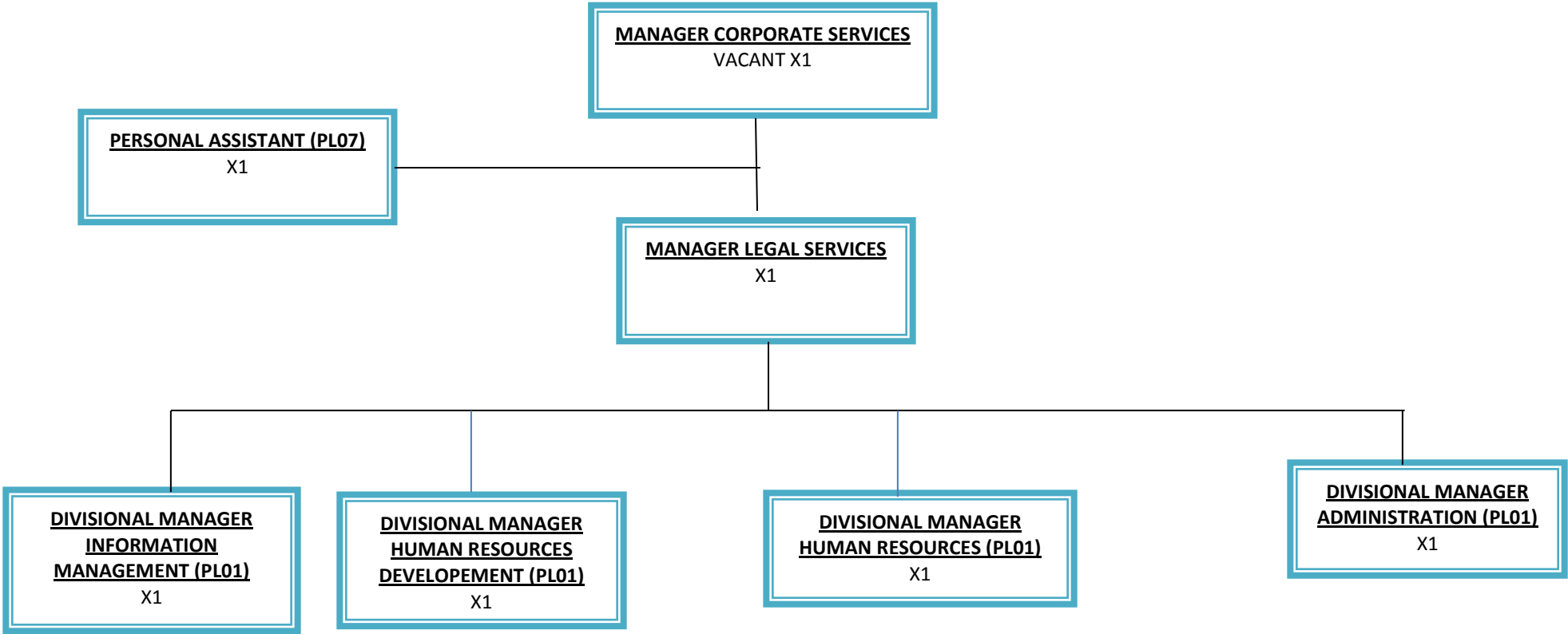
DIVISION: TOWN PLANNING



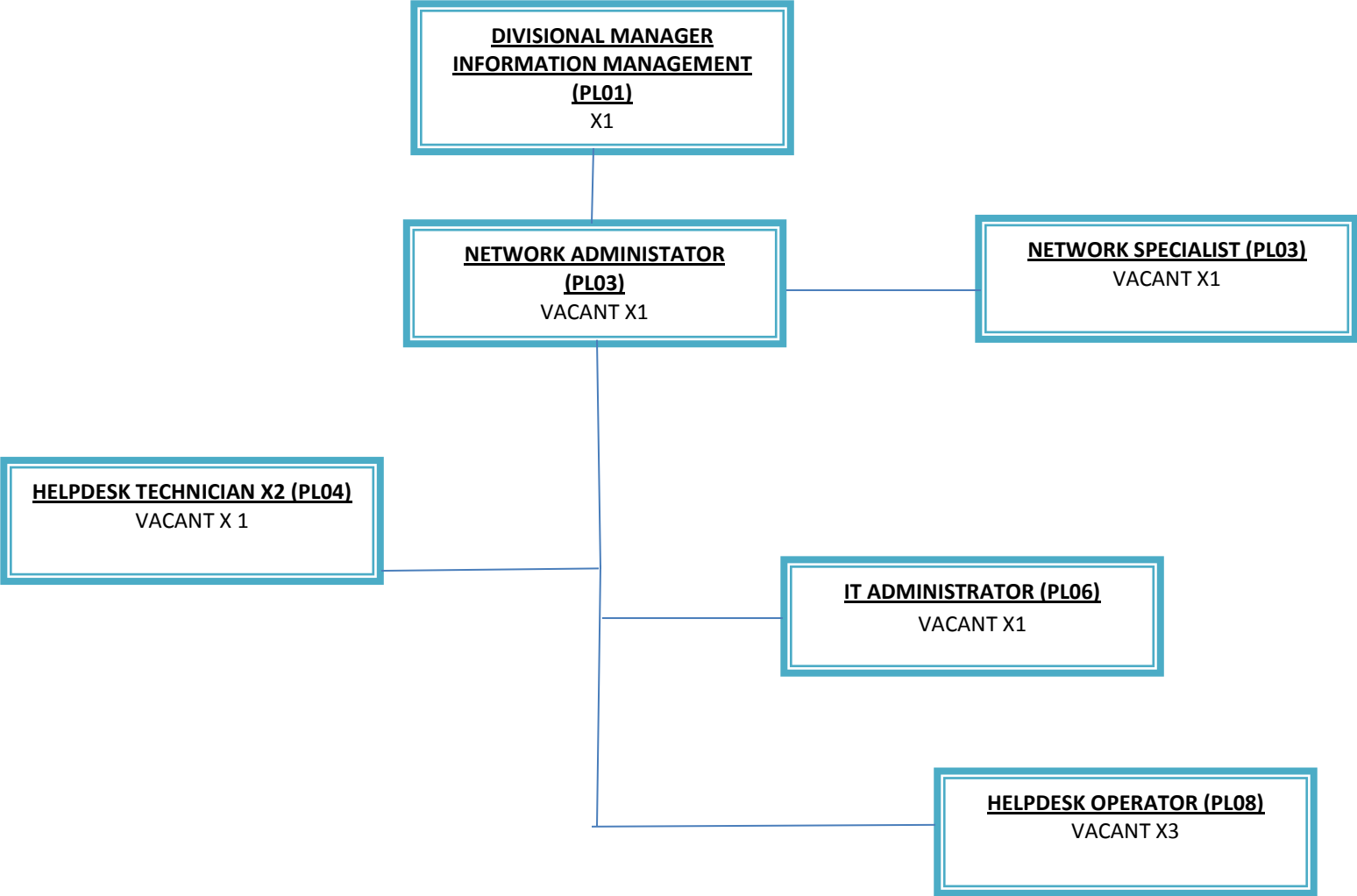
DIVISION: LAND & BUILDING



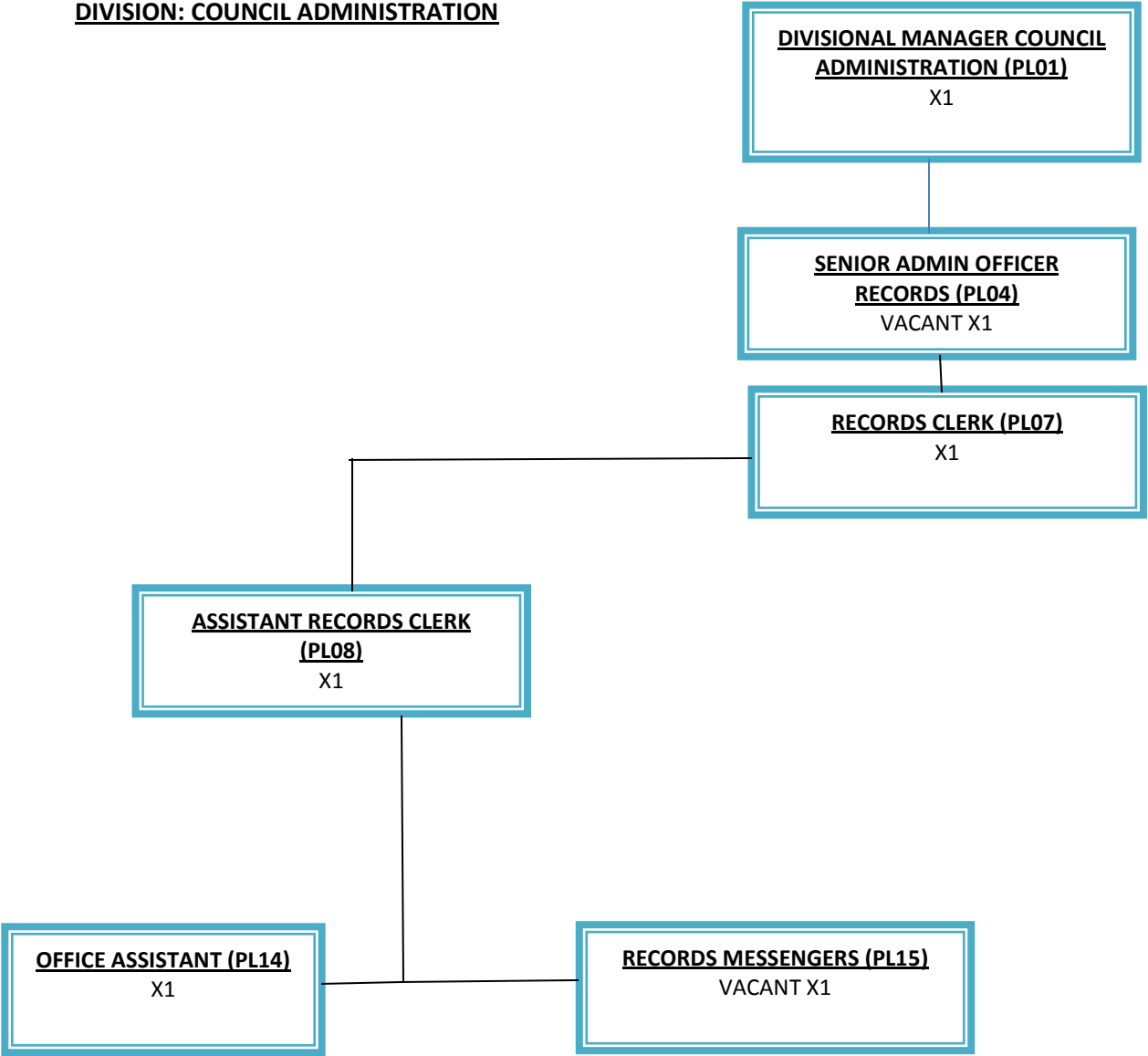
DEPARTMENT: CORPORATE SERVICES



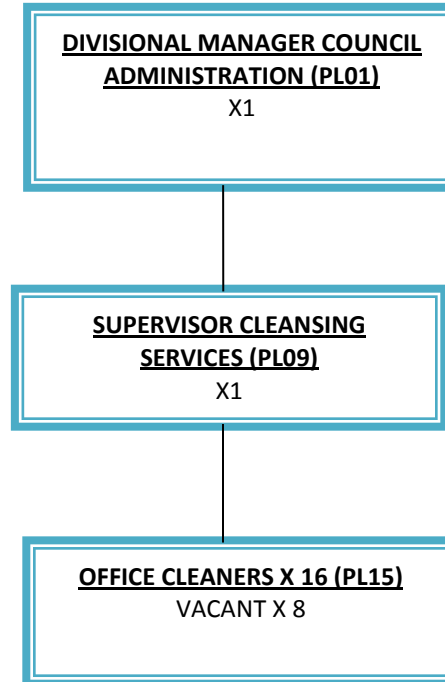
INFROMATION TECHNOLOGY DIVISION



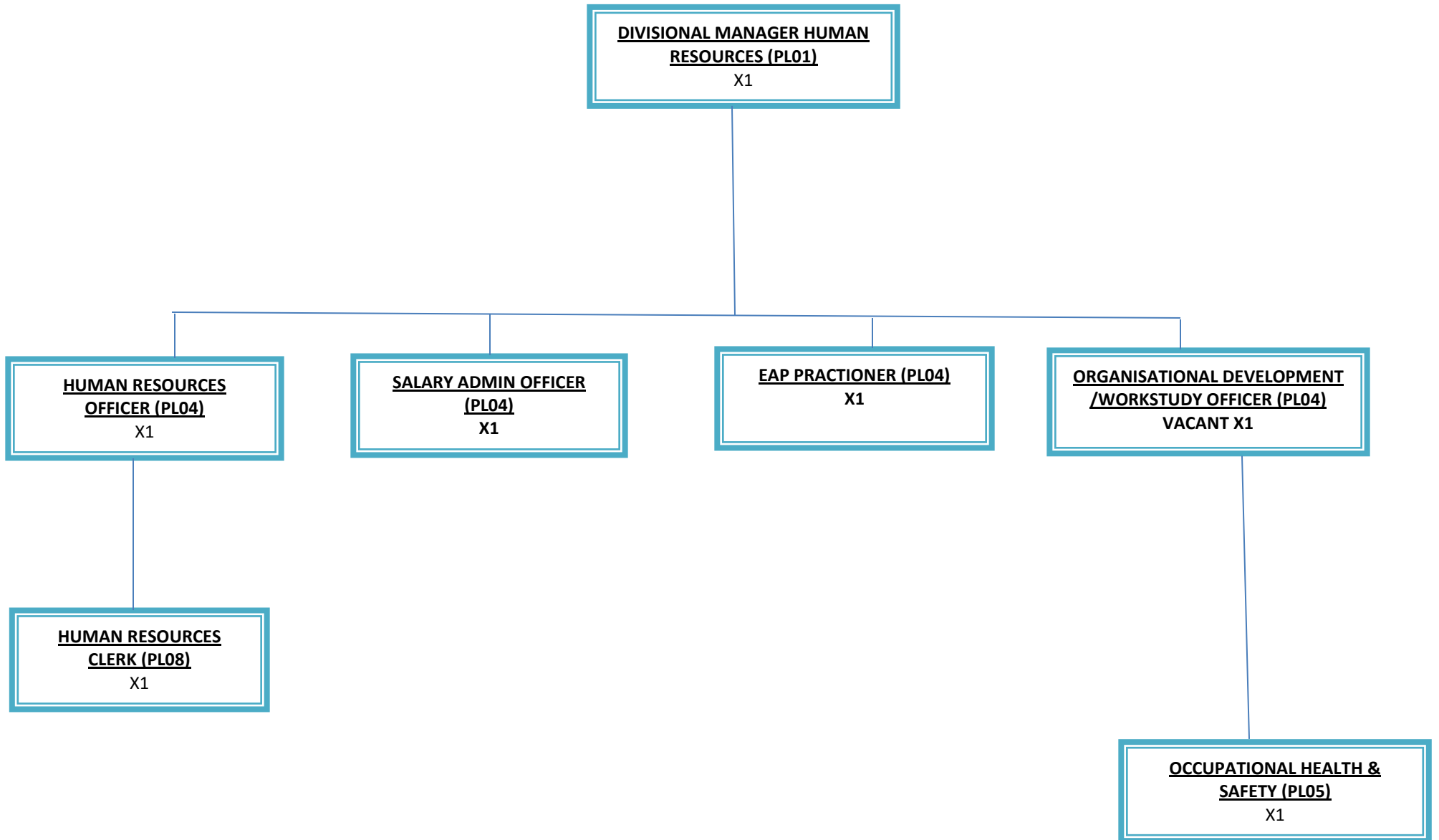
DIVISION: COUNCIL ADMINISTRATION



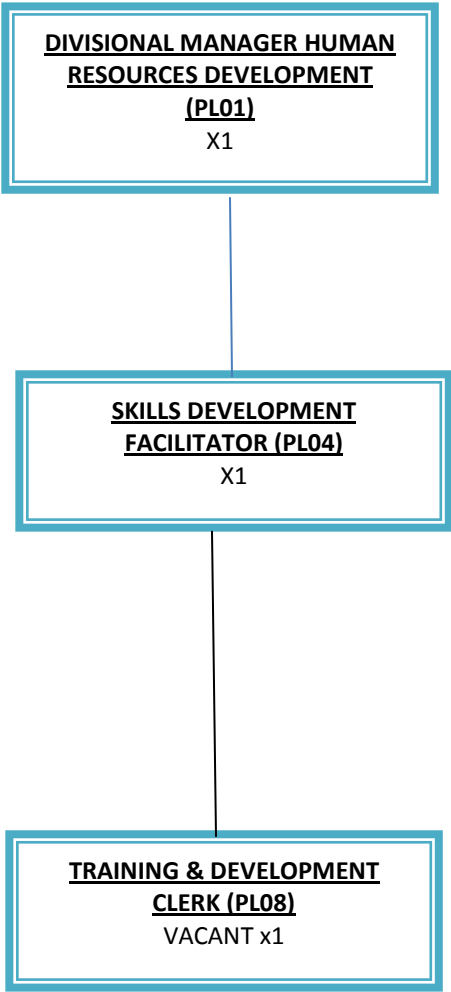
DIVISION COUNCIL ADMINISTRATION (CONTINUED)



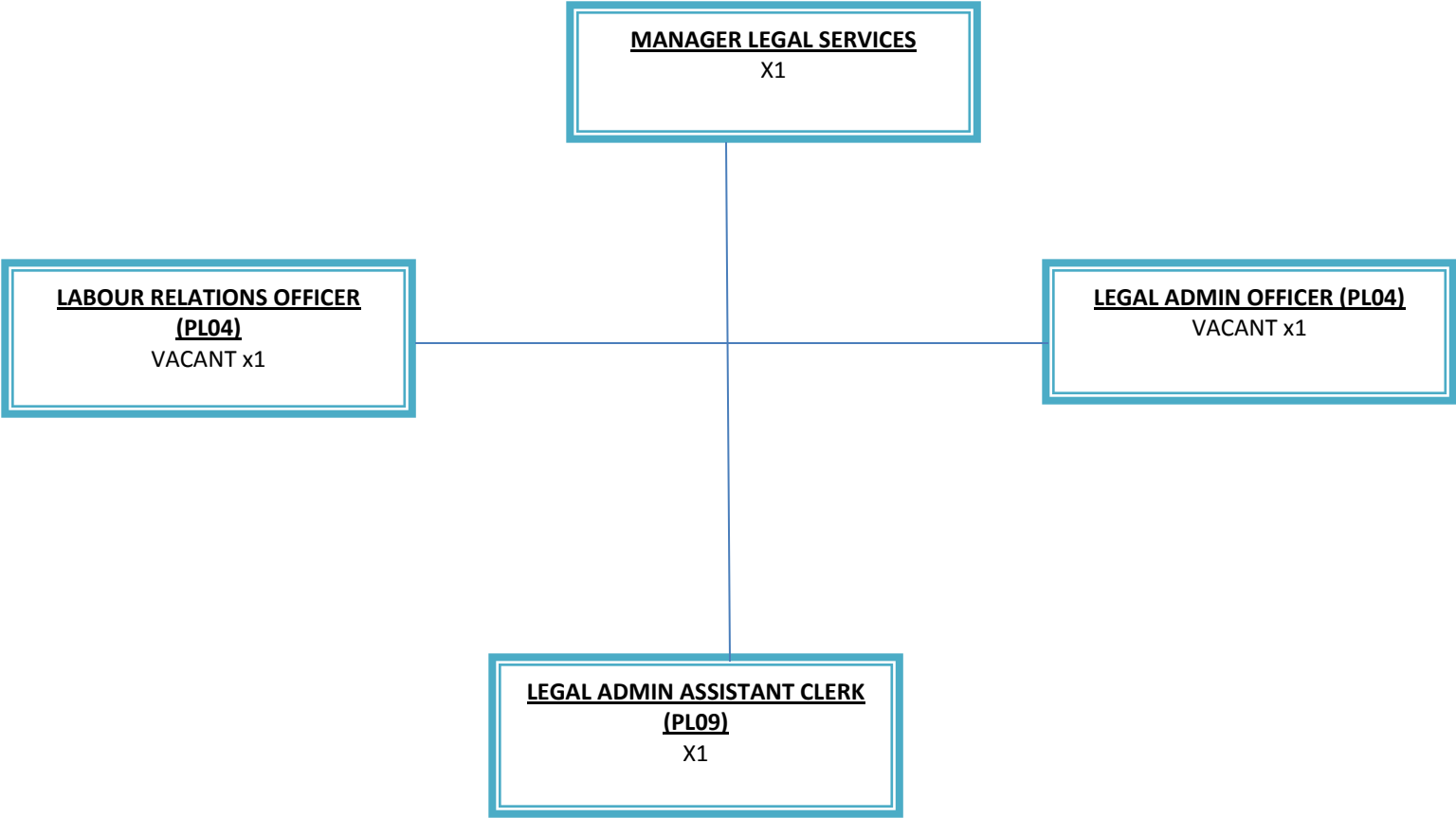
DIVISION: HUMAN RESOURCES



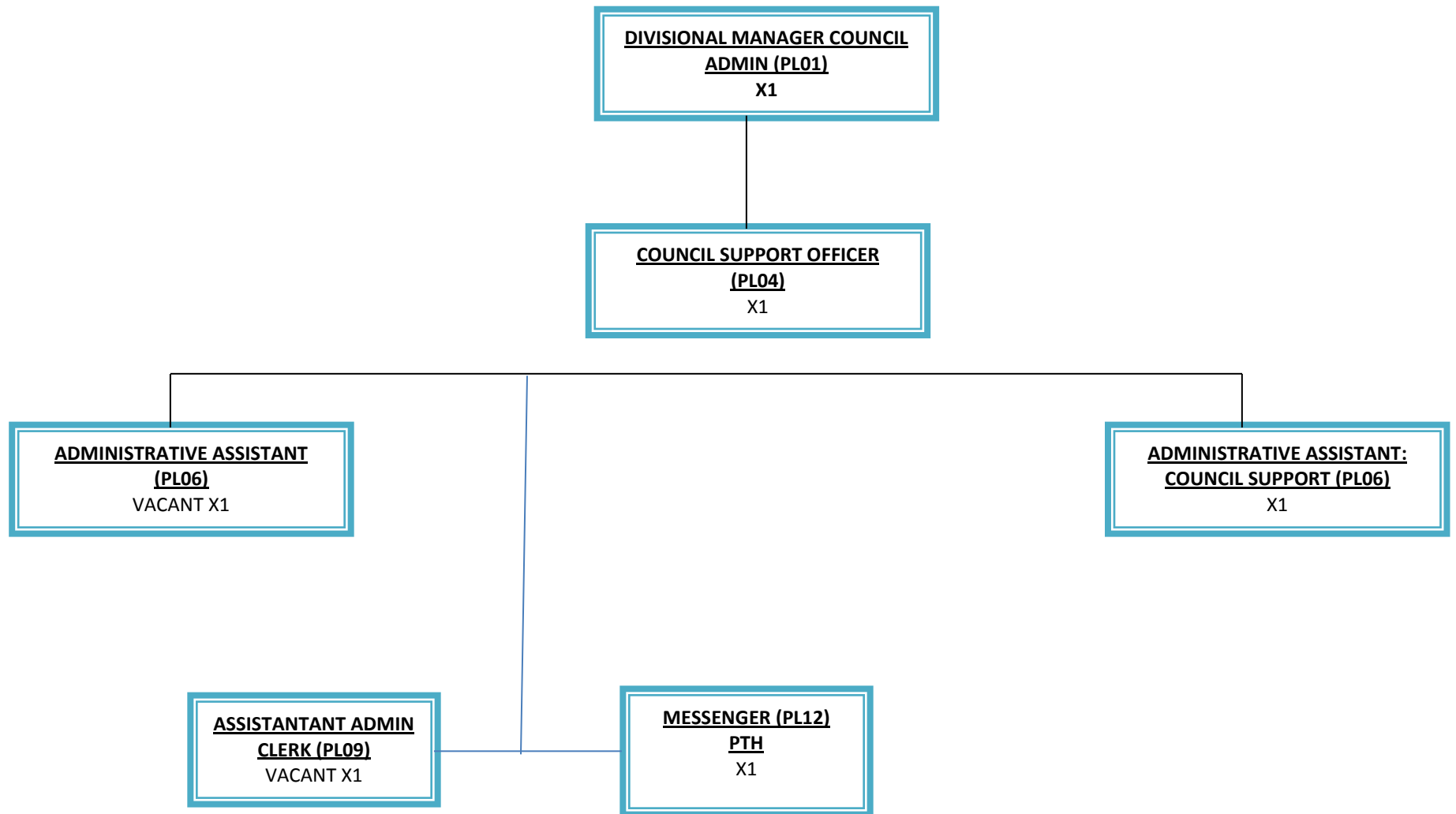
DIVISION: HUMAN RESOURCES DEVELOPMENT



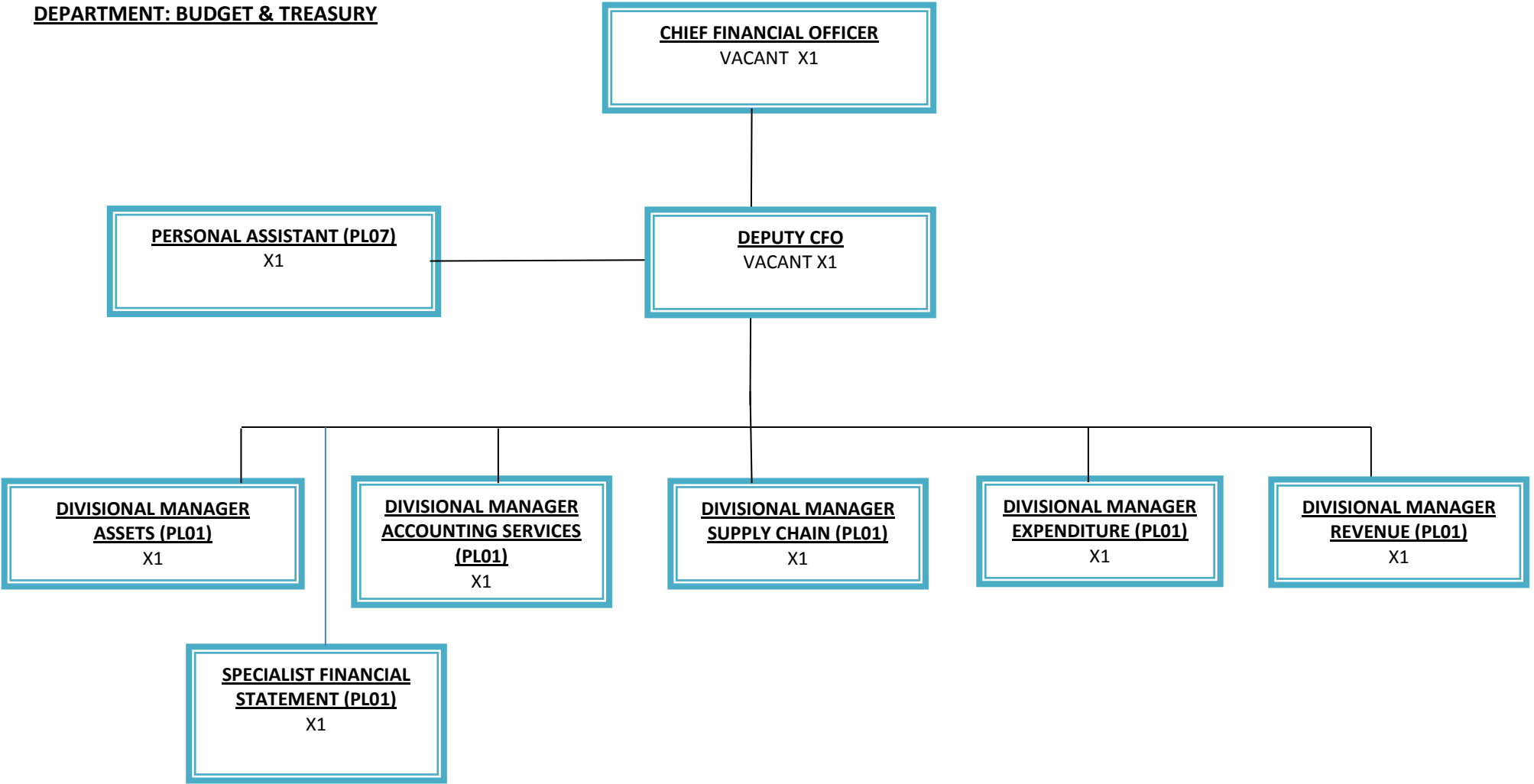
DIVISION: LEGAL SERVICES



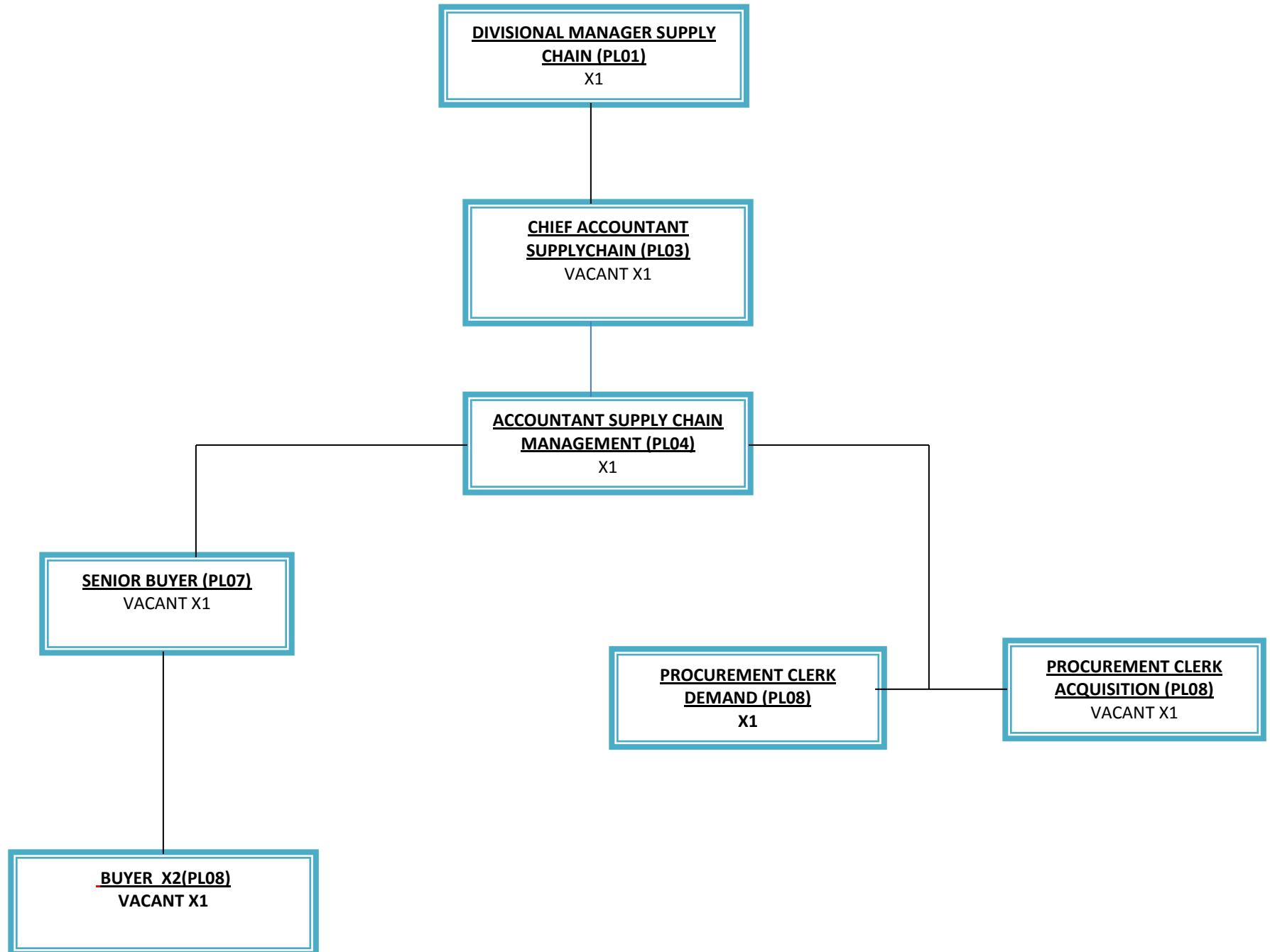
DIVISION: COUNCIL ADMIN



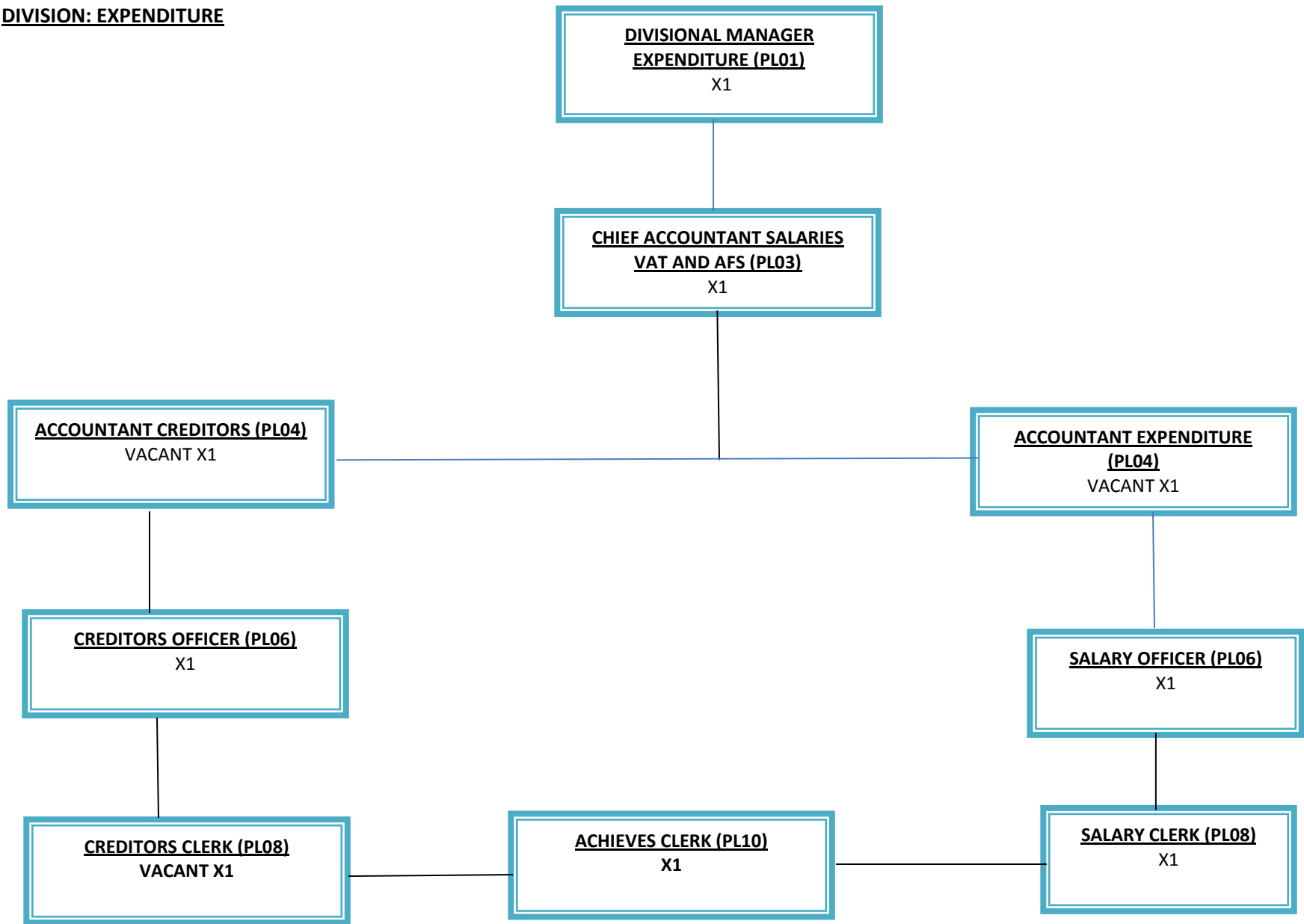
DEPARTMENT: BUDGET & TREASURY



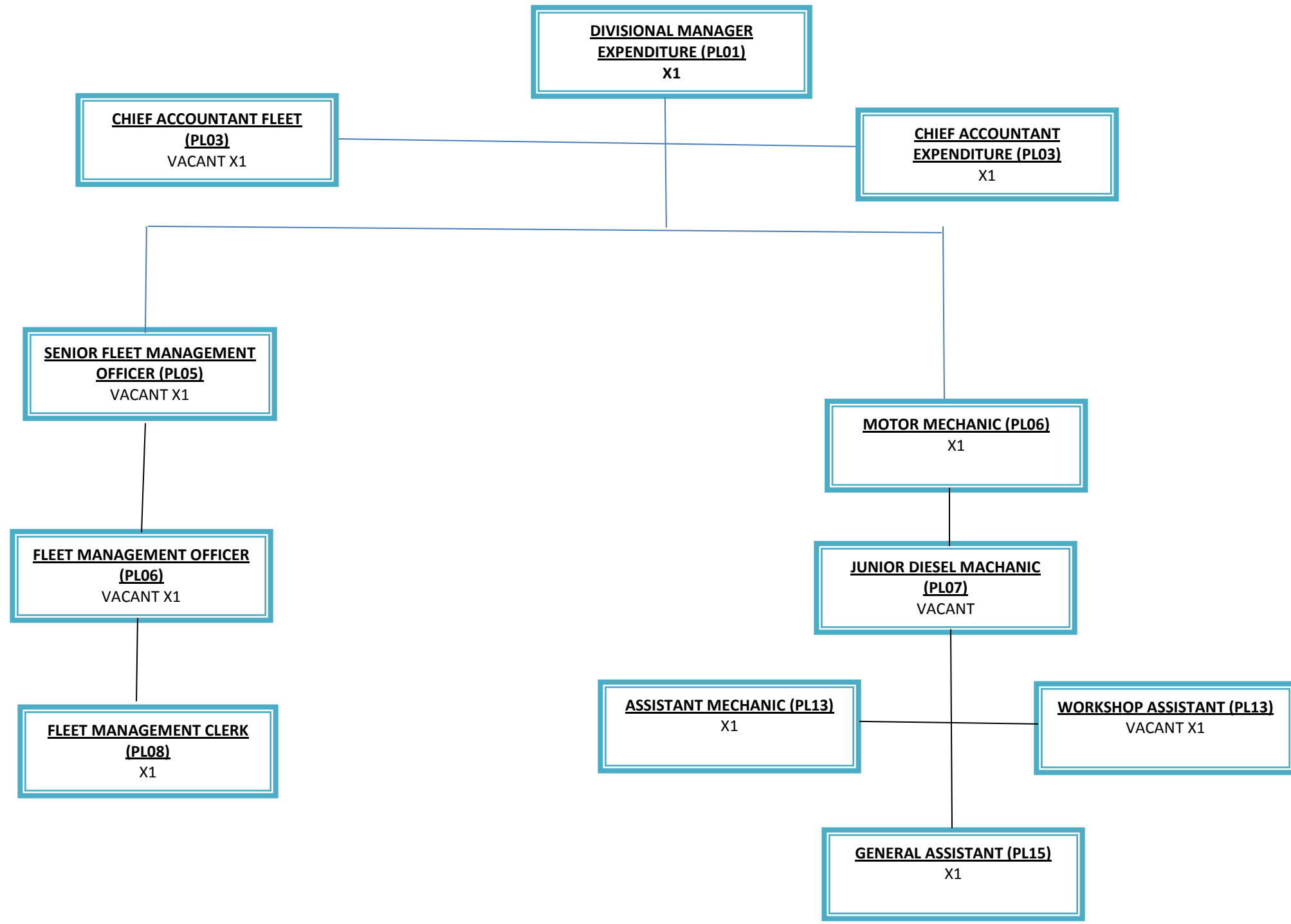
DIVISION: SUPPLY CHAIN



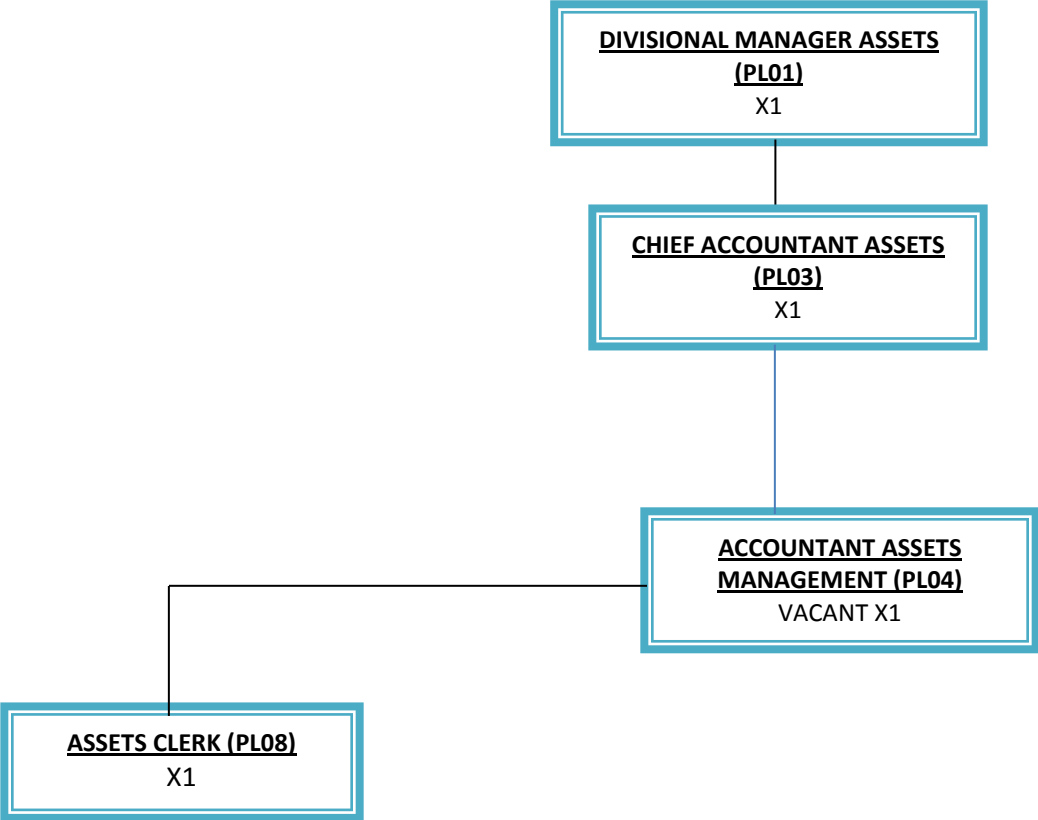
DIVISION: EXPENDITURE



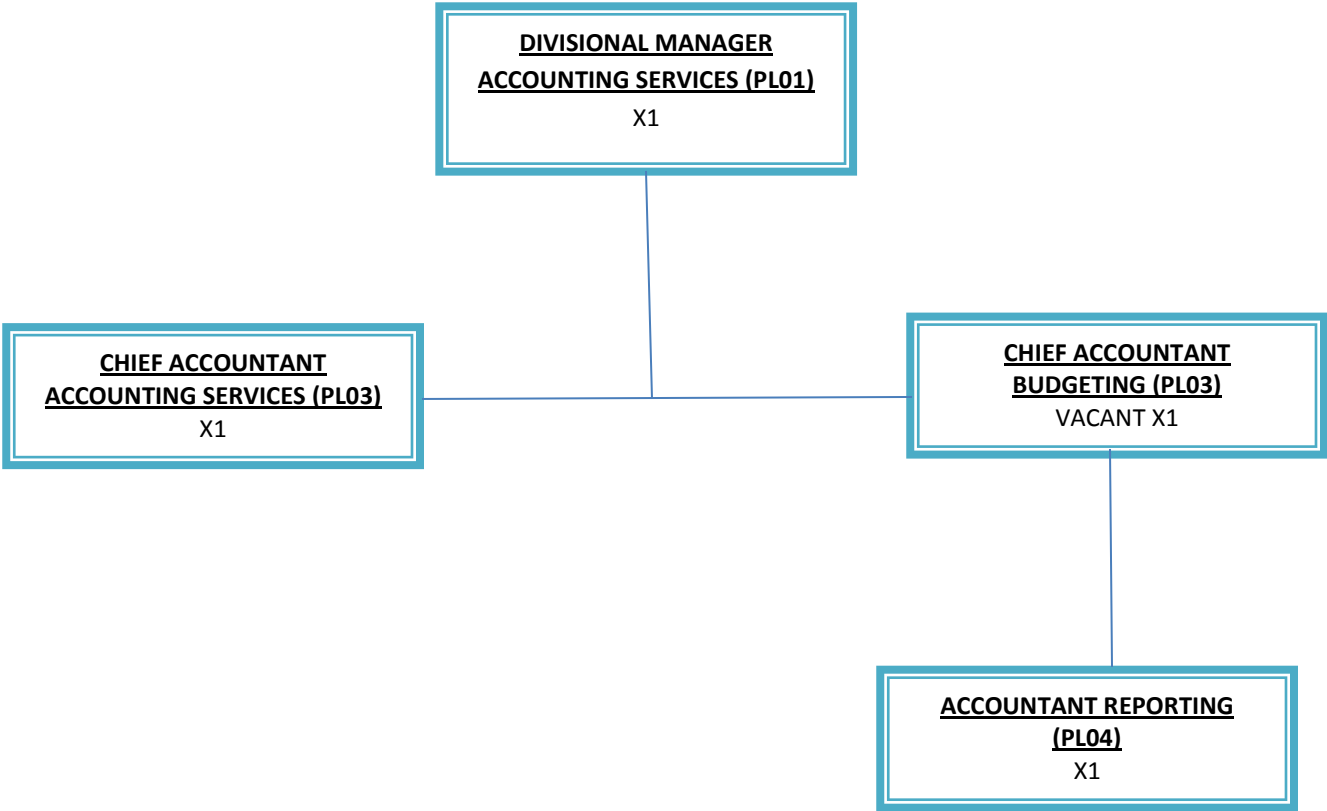
DIVISION: EXPENDITURE CONTINUE



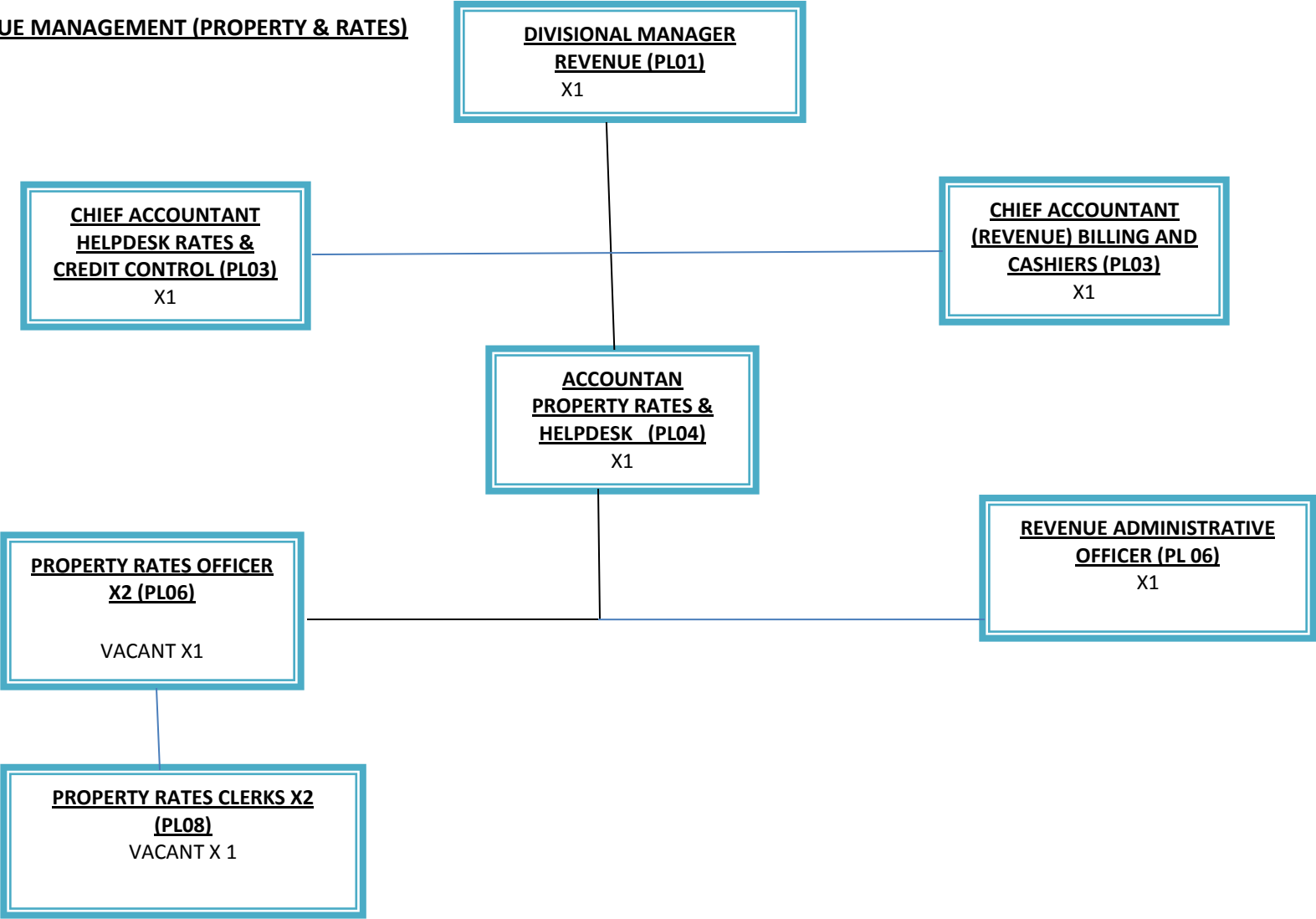
DIVISION ASSETS MANAGEMENT



DIVISION ACCOUNTING SERVICES



DIVISION: REVENUE MANAGEMENT (PROPERTY & RATES)



DIVISION: REVENUE MANAGEMENT DIVISION

